



DOCUMENTATION OF DISABILITY DATA



PAKISTAN POVERTY ALLEVIATION FUND

“The views expressed in this publication are those of the consultants and do not necessarily represent those of Pakistan Poverty Alleviation Fund.”

Copyright © 2012

Material in this publication is confidential and is restricted to review as advised by Pakistan Poverty Alleviation Fund only. It cannot be freely quoted or reprinted unless approved by Pakistan Poverty Alleviation Fund.

Avicenna Consulting (Pvt) Ltd

18-B, Kaghan Road, F-8/4 Islamabad, Pakistan
Tel: (92-51) 8432882, 8432884

CONTENTS

Acknowledgements	02
Foreword	03
Executive Summary	04
Background	06
Data Management	07
Limitations	08
Suggestions	09
Methodology - Technical	10
Findings	12
Annexures	29

ACKNOWLEDGEMENTS

Avicenna Consulting Pvt Ltd expresses its deep appreciation to Ms. Fahmina Puri, Ms. Rehana Parveen, Ms. Munazza Shabir, Ms. Shaheen Akhtar, Mr. Asad Aman, Mr. Yasir Ali and Mr. Saad Masood Butt of the Disability Unit at Pakistan Poverty Alleviation Fund for their untiring and active support throughout this intense process of data documentation and analysis.

We are especially grateful to Ms. Maliha Babar and Mr. Yasir Ashfaq for their encouragement and cooperation during this assignment.

We acknowledge our special thanks to Dr. Aliya Qadir Khan for her tireless commitment and technical assistance in the analysis of this data.

FOREWORD

In July 2011, the President of Pakistan officially ratified the United Nations Convention on Rights of Persons with Disabilities (UNCRPD), joining over 100 countries that have signed the instrument of ratification.

The prevalence and magnitude of disability has been an issue of considerable debate since the 1998 population census that found that 2.5% of the population was disabled. Since then, there have been several attempts to quantify and categorize different types of disabilities. In the recent World Report on Disability 2011, which based its disability estimates from a World Health Survey from 2002 to 2004, found a disability prevalence of 13.4% for Pakistan with 9.6 years of full health lost to disability per 100 persons in 2004.

PPAF was keen to determine the implications of disability in its development initiatives. It undertook a comprehensive carpet survey of 23 union councils comprising 80,000 households to determine the type and frequency of disability among other socio-economic indicators. The carpet surveys involved identification of persons with disability and their thorough medical examination by specialists to document impairments and categorize type and severity of disability. This is probably the first time such an extensive exercise was carried out for disability in Pakistan.

The results were staggering – eight out of every 100 Pakistanis are disabled to some degree or other; and one out of every 130 persons has some form of severe disability. The surveys also found that multiple disabilities were common among the population.

The PPAF disability survey not only endorsed global estimates of disability prevalence, but also raised an important issue of social inclusion that was lacking in our development interventions. PPAF's mission is to reach and rehabilitate marginalized groups by following its core values that include democratic governance, transparency and accountability, sustainability and social inclusion of excluded individuals and groups. Although poverty and disability are inextricably linked but systemic impediments further hamper access to services, statutory benefits and facilities.

In order to test mainstreaming of disability in development, PPAF piloted a disability project after the devastating earthquake of 2005 that hit the northern areas of Pakistan. A survey revealed that a significant ratio of disability had been pre-earthquake. Following the successful completion of the earthquake project, disability was mainstreamed into PPAF and launched nationwide in seven districts of Pakistan and AJ&K.

This report on the result of PPAF's work in disability is presented in three parts. Part one is an analysis of the survey, which provides an in-depth view of the socio-economic landscape of Pakistan. Part two comprises an evaluation of the PPAF Disability Programme and lastly, a collection of case studies highlighting importance of integrating disability in mainstream development.

September 25, 2012

Qazi Azmat Isa

Chief Executive

Pakistan Poverty Alleviation Fund (PPAF)

EXECUTIVE SUMMARY

This document is a report of data analysis of approximately 80,000 households surveyed up to August, 2011 through disability teams of partner organizations of Pakistan Poverty Alleviation Fund in selected 23 union councils in seven districts of Pakistan. Additional data collected after August 2011 has not been included in the analysis and may result in negligible changes in the overall percentages.

Demographics

A slightly higher preponderance of males to females was noted with a male to female ratio of 1.1:1. In the three union councils surveyed in Karachi district, 176 responses were for 'others'. These accounted for 0.04% of the total sample.

The most common category of relationship of the informant to head of household found was that of unmarried child in 50%. The spouse accounted for 16%.

The majority of households surveyed (95.5%) were self-owned.

At least 38.9% of the population surveyed was married. 58.5% were unmarried, while 23% were widows/widowers. 57.7% of all marriages were between first cousins, while those between non-relatives accounted for 38.9%.

Income

26.5% of respondents said that they had no principle source of income. About 20% were students. Only 2.8% were agri labourers. Fishery as a source of income was predominantly found in Karachi district. 98% said that they had no secondary source of income.

Water

The main source of drinking water was piped in residence in 38% followed by hand pump in residence in 36%. Regional differences were noted e.g. over 80% used a hand pump in residence in union councils surveyed in Multan district, while 67% obtained their water from an open well in Pachiot in Rawalakot.

Sanitation

The most common type of toilet found was 'own pit latrine' in 36% of households. Own flush type latrine was found in 17% of households. Of concern was the relatively high proportion of open defecation in 33%.

There were regional variations with least open defecation in Rawalakot which also had high prevalence of own pit latrine (over 70%), while Hill Kot, Satbani, Asota, Panj Koha and Bapho had open defecation rates of over 60%.

Health

19.1% of respondents indicated that there was no health facility close to their village. The most common health service provider included MBBS private clinic at 12.8% followed by government dispensary in 10.6%. Private health services available to communities accounted for close to 30% . Alternate health services accounted for 18.7%.

Education

61.3% of the population surveyed responded that they had not attended school at all. The highest grade achieved was 5th at 6.3% followed by 10th at 5.5%. Only 1.9% made it to 12th grade and only 1.5% were graduates. There was regional variation with the highest non-attendance recorded in Saleh Mahay at 79% and the lowest at Pachiot in 19%. The highest attendance at religious schools was at Durana Langana in 11.8%. The highest matriculate and graduate rates were found in Pachiot at 19% and 8.9% respectively.

Disability

The most common type of severe disability found was visual impairment in 0.9%, followed by physical disability in 0.5% and hearing impairment in 0.3%. Severe disabilities were found to have a prevalence of 2% while mild to moderate disabilities accounted for 10%. All disabilities (severe plus mild to moderate) had a cumulative prevalence of 12%. This implies that one in every fifty Pakistanis has severe disability, and one in every ten has some form of mild to moderate disability.

The most common noted cause of disability was at birth implying a congenital origin in 68% followed by disease in 57.3%. More than one cause was identified in some cases. 5.4% of disabilities resulted from injuries due to disasters.

40% responded that the cost of treatment for the past one year was more than Rupees 5000. 29.4% said that it was between 0 to 500 Rupees.

BACKGROUND

Pakistan Poverty Alleviation Fund conducted a disability survey in 23 union councils in seven districts. The areas covered include the following;

DISTRICTS	UNION COUNCILS
Mansehra	Kawai, Ganool, Hill Kot, Satbani
Swabi	Karnal Sher, Asota, Kalu Khan
Swat	Tutano Bandai, Kanju, Koza Bandai
Multan	Durana Langana, Binda Sandila, Saleh Mahay, Lutafabad, Panj Koha
Karachi	Ibrahim Haidri, Landhi, Rehri
Khairpur	Bapho, Kumb, Jishani
Rawalakot	Pachiot, Pakhar

This document is a report from the data analysis of about 80,000 households surveyed. It is not a complete and comprehensive report of the project. Avicenna Consulting was tasked with the following;

- Review the data available
- Data tabulation
- Data analysis
- Results/findings
- Report

The original data was available in Microsoft Access format. A database using EPI INFO Ver 6 was developed for the purpose of analysis and Microsoft Access data was transferred to EPI INFO. The Analysis section includes a summary of key findings. The detailed results are presented as annexures.

DATA MANAGEMENT

Data was received on a custom made Access data base that has very limited options for analysis of a data of 430,000 population in 80,000 plus households, collected from seven districts in 23 union councils, in which five union councils were further divided into 11 (for the purpose of data collection). Data was transferred from Access to Epi-Info version 6 where a master data base was created according to different sections and forms provided.

For each union council and its division, 3 separate files were created in Epi-Info version 6 and a file in Excel. A total of 84 files were created in Epi-Info, 29 files for section 1 and 2 (Form A – general information and household disability), 27 files for section 3 (Form A – household infrastructure and characteristics) and 28 files for section 4 (Form B- persons with disabilities).

84 files for the same sections and forms were also created in Excel, for counter checking and analysis of certain parts of data.

A total of 162 files were analyzed.

Certain sections were not ready for analysis - these include Section 3 in UC Binda Sandila and Saleh Mahey – Multan and form B in UC Ghanool – Mansehra. Data for UC Buch Khusro was incomplete in the data base at the time of analysis and therefore this UC was excluded from the report.

LIMITATIONS

Due to missing data in the database, the total figures/numbers in different sections vary. This is also contributed to by wrong entries, lengthy or difficult coding, too many variables in one question and above all, understanding of the data collectors.

Non-response/missing data/wrong entries are estimated at 8 - 10% of the total data.

Some of the variables could not be analyzed due to entries in 'numbers', e.g. Age, where it was entered in numbers, ranging from zero to more than 100. A few ranges of age would have been better to analyze this large number of data.

Some questions could be easily dealt with simple codes, instead of yes/no options e.g. Religion, where five questions with yes/no are given. Five codes (1-5) in one question could solve the purpose.

A number of entries could not be included because these were entered in 'text' instead of numbers, e.g. 'others' on form B.

The data analysis of about 80,000 households surveyed in 23 union councils in seven districts is up to August 2011. Additional data collected or included in analysis after this period may result in some minor change of percentages.

SUGGESTIONS

This was a huge undertaking by PPAF and has provided some critical insight into human development needs and issues relating to social exclusion. We acknowledge the challenging task for the disability team in compiling the data and maintaining a large and invaluable data base.

For future analyses, it would be useful to develop a database protocol that can be referred to for analysis. This often requires proper sampling, sampling frames, expected and available percentage/prevalence in previous studies, survey/study design, hypothesis, questionnaire designing, definitions of variables and codes, development of data base for data entry and analysis, clear instructions for trainers and enumerators in respective areas, instructions and hands-on training of data entry personnel on data base.

A pilot survey is a must for clarification and refinement of all aspects of survey. This includes testing of the database to ensure that it can provide the outputs required in terms of field analysis and reporting.

Microsoft Access was adopted as a tool for data management. While this is useful for small data, it can be quite cumbersome in handling of large survey data. It is recommended that other software be explored when planning such surveys in the future. Also, it would be most helpful for the person/team who will perform the data analysis to discuss with the data base design team on technical issues like fields, codes, double entry etc.

Data collectors/enumerators should spend more time on training for understanding of the questionnaires and their coding.

SURVEY METHODOLOGY - TECHNICAL

The PPAF teams utilized the services of technical experts for the purpose of conducting screening and assessments before prescribing any rehabilitation measures. The initial identification of persons with disability at household level was done by the field teams. The intention of the assessments was to categorize into two main groups—severe disability and mild to moderate disability.

Standard examination protocols were established by PPAF and their field and specialist teams for persons with disability.

Vision

An optometrist (BSc) used a standard Snellen visual acuity chart to check presenting visual acuity. WHO criteria of vision less than 6/18 in the better eye was used to classify individuals as visually impaired. If their vision was less than 3/60 in the better eye, they were classified as blind. Persons screened for visual impairment were broadly classified into two functional categories - unable to see (severe disability) and difficulty in seeing (mild to moderate disability). Appropriate intervention was prescribed e.g. spectacles or further ophthalmic care at a hospital. Those found to have low vision were prescribed low vision devices.

Hearing and Speech

A qualified hearing and speech therapist (MSc) examined persons who were identified as having a hearing or speech disorder. The specialist used an audiometer to test for hearing and speech assessment techniques to determine level of speech impairment and limitations in being able to communicate. The persons examined were classified into two functional categories - unable to hear or speak (severe disability) and difficulty in hearing or speaking (mild to moderate disability). Those found with hearing impairment were prescribed hearing aids, while speech therapy was recommended for those with speech impairment.

Physical

A specialist trained in orthotics and prosthetics (BSc) conducted a physical assessment of persons identified with a physical impairment. The specialist assessed the individual for presence of deformity, loss of limb, partial use or disuse of limb, extent of mobility and limitations imposed by disability, and need for prosthetic or orthotic devices. Persons screened for physical impairment were broadly classified into two functional categories - unable to walk, climb or work (severe disability) and difficulty in walking, climbing or working (mild to moderate disability). Those with physical disability who could benefit from rehabilitation were prescribed appropriate orthotic or prosthetic devices.

Learning and Self-Care

A specialist in clinical psychology and behavioural sciences (MSc) examined individuals identified as having learning difficulties or those who faced challenges in self-care. The specialist used a combination of observation techniques, cognitive tests and interviews with parents, guardians or other household members to obtain an overall assessment of the 'learning disability'. Persons screened for learning

impairment were broadly classified into two functional categories - unable to learn new tasks (severe disability) and difficulty in learning new tasks (mild to moderate disability). Those identified as slow learners were prescribed counseling for their parents or guardians and rehabilitation measures suggested.

This report does not evaluate the screening and assessment process nor analyze any outputs or outcome of rehabilitation measures.

MAIN FINDINGS

BASIC DEMOGRAPHY

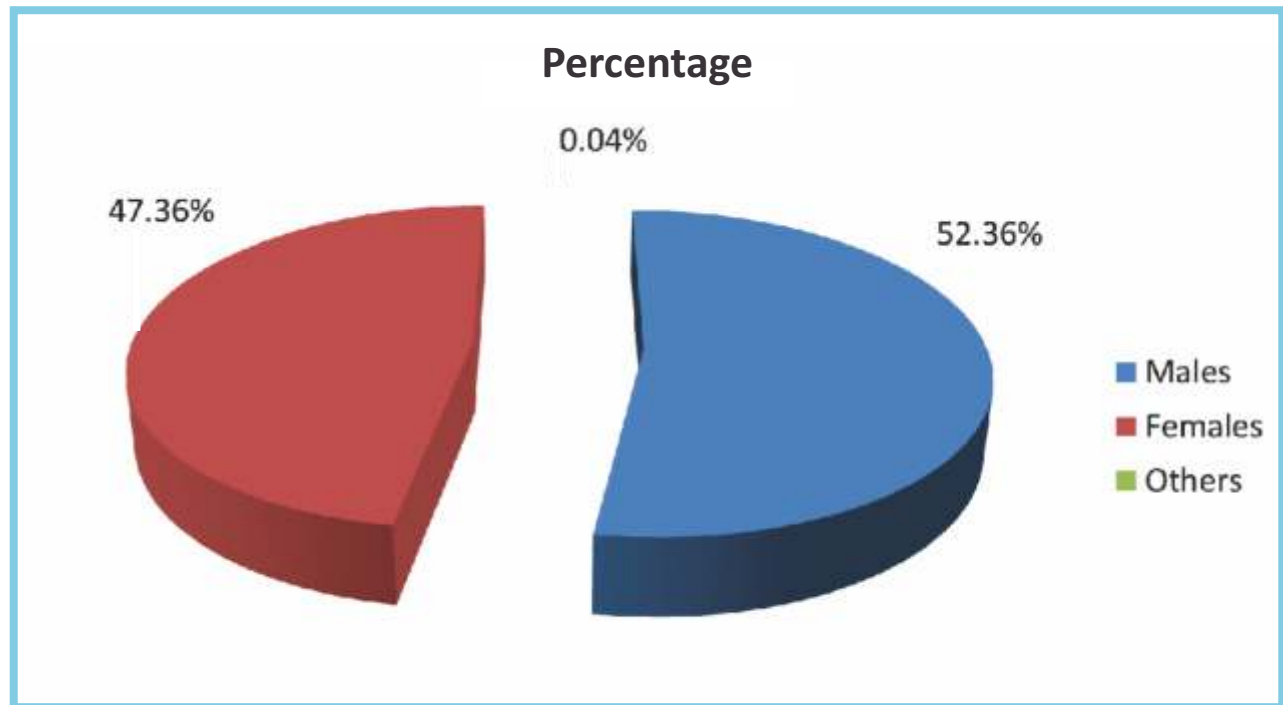
A total of 23 union councils were surveyed. The breakdown of number of households surveyed in each Union Council is given below.

Number of Households Surveyed (Union Council-wise)

District	Union Council	Number of Households Surveyed	Population covered
Mansehra	Kawai	2701	14028
	Ganool	3078	17037
	Hill Kot	3115	17443
	Satbani	3118	14471
Swabi	Karnal Sher	2795	16940
	Asota	2200	14941
	Kalu Khan	4021	24568
Swat	Tutano Bandai	2260	18385
	Kanju	3462	15737
	Koza Bandai	2593	20138
Multan	Durana Langana	3927	22112
	Binda Sandila	7189	33476
	Saleh Mahay	4669	9896
	Lutafabad	4492	23477
	Panj Koha	3890	23242
Karachi	Ibrahim Haidri	4140	27896
	Landi	4514	19461
	Rehri	3627	20695
Khairpur	Bapho	2107	14174
	Kumb	3277	21003
	Jeshani	2073	12145
Rawalakot	Pachiot	3053	14983
	Pakhar	2638	14516
Total		78939	430764

HOUSEHOLD INFORMATION - GENDER

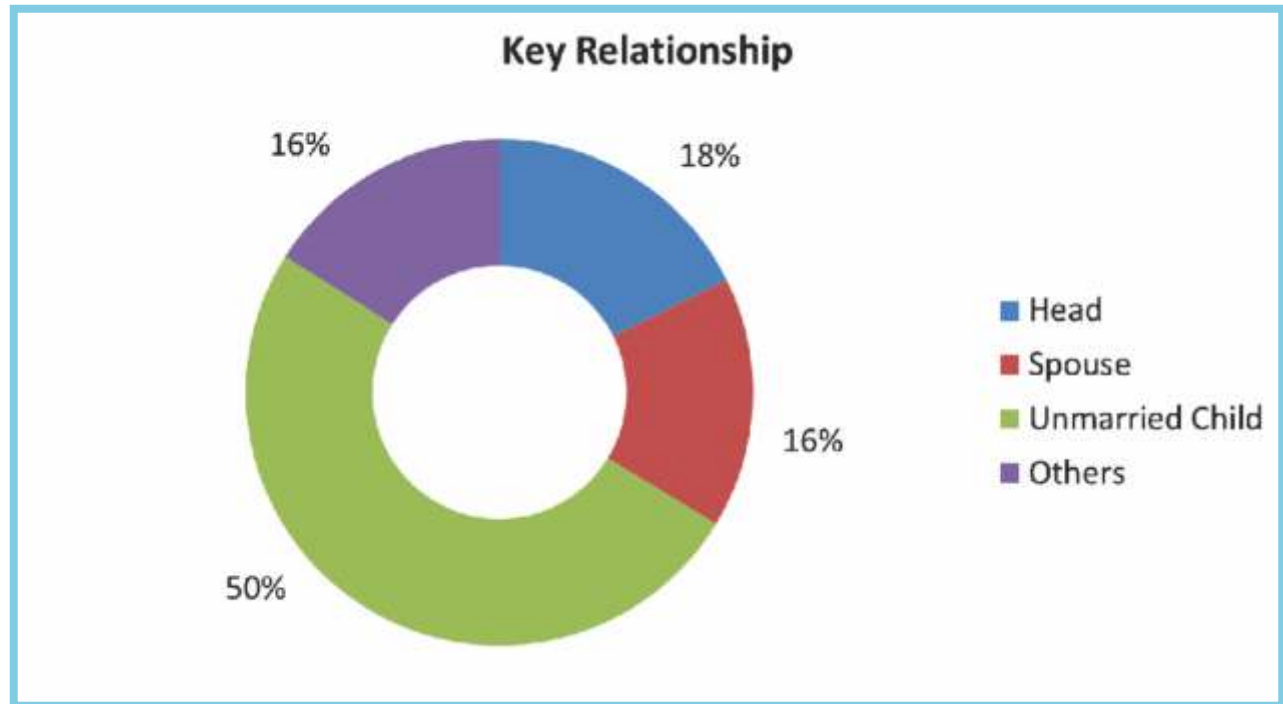
Population break-up (Gender-Wise)



A slightly higher preponderance of males to females was noted with a male to female ratio of 1.1:1. In the three union councils surveyed in Karachi districts, 176 responses were for 'others'. These accounted for 0.04% of the total sample.

HOUSEHOLD INFORMATION - RELATIONSHIP

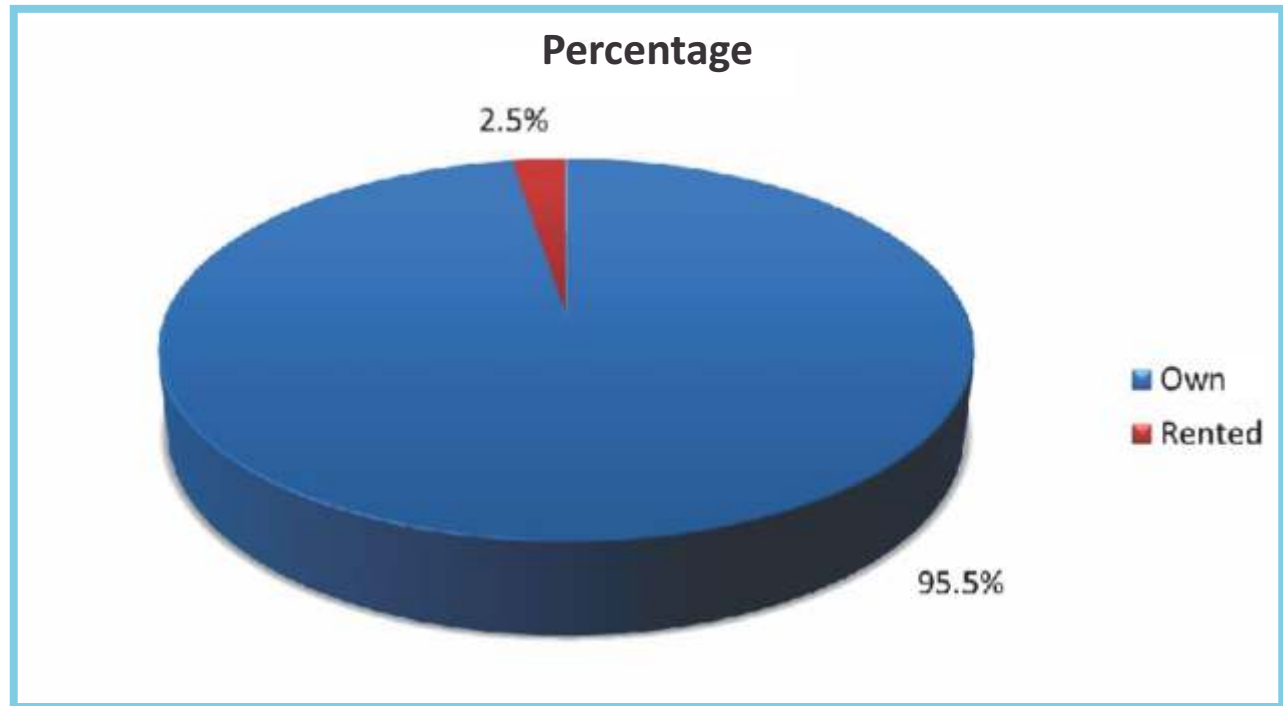
Relationship to Head of Household



The most common category of relationship of the informant to head of household found was that of unmarried child in 50%. The spouse accounted for 16%. This may be because the survey teams visited during the day time when the head of household may not be at home.

DWELLING OWNERSHIP

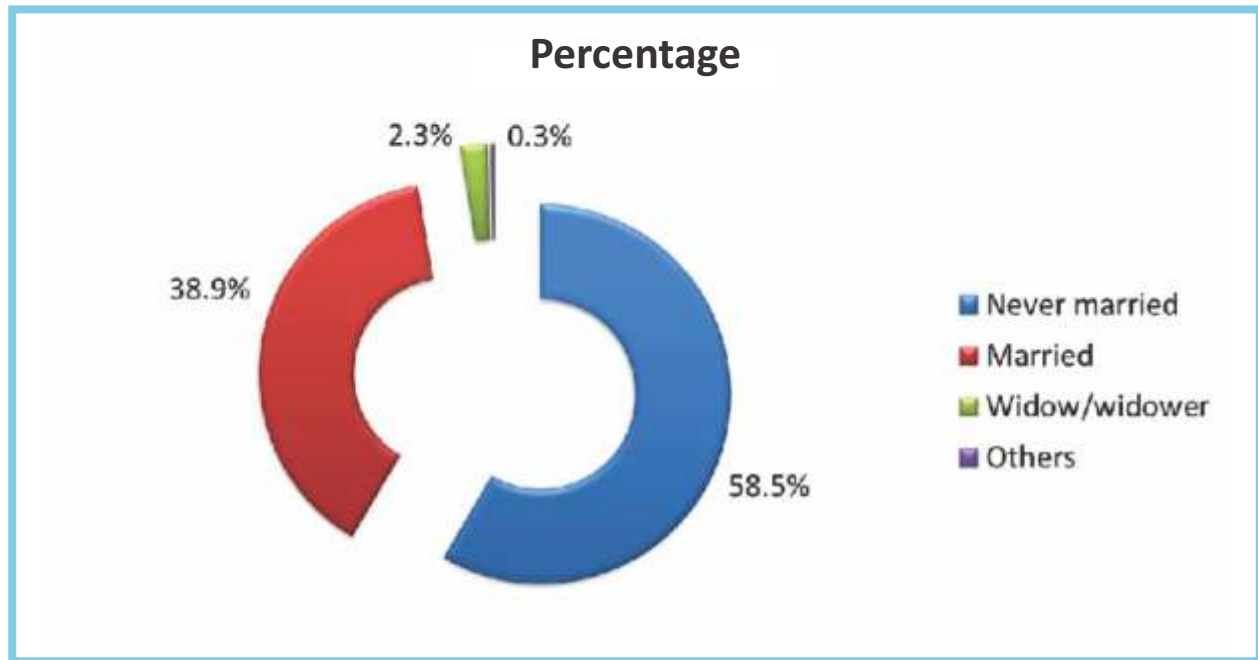
Dwelling Ownership



Majority of households surveyed (95.5%) were self-owned.

MARITAL PROFILE

Marital Status

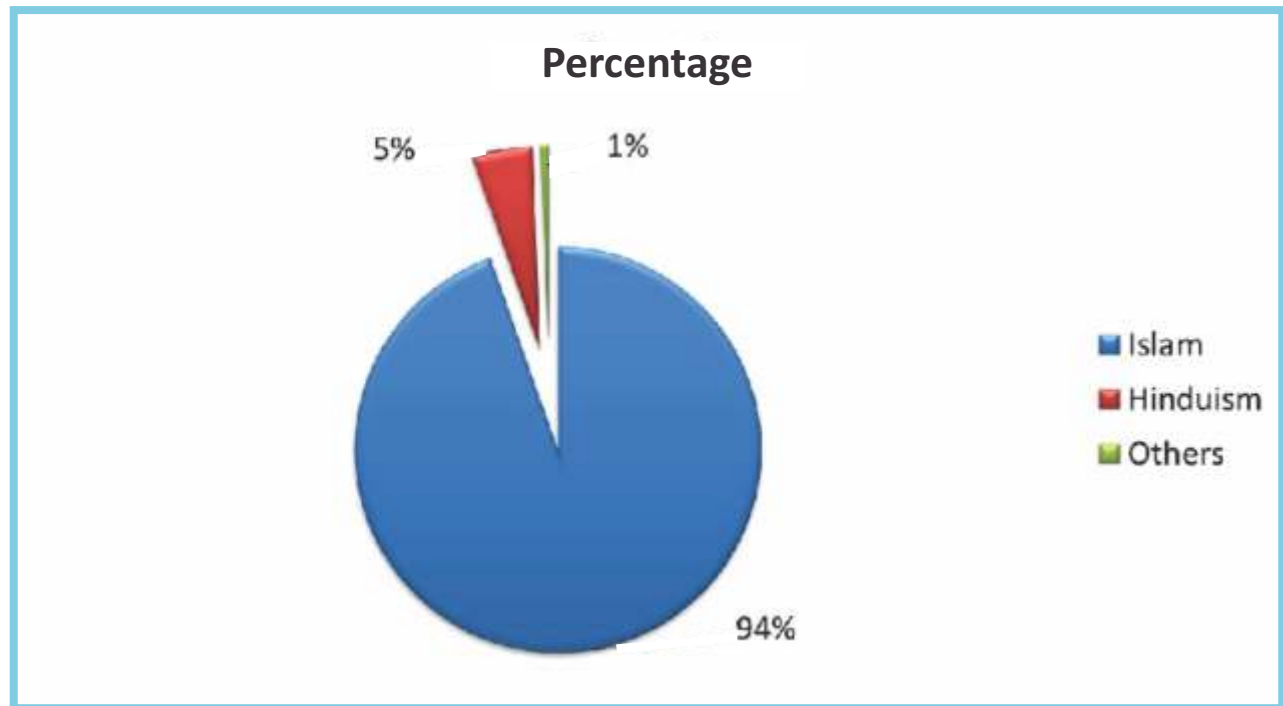


At least 38.9% of the population surveyed was married. 58.5% were unmarried, while 23% were widows/widowers. 57.7% of all marriages were between first cousins, while those between non-relatives accounted for 38.9%. There regional differences for instance in Durana Langana, Binda Sandila and Panj Koha where over 90% of marriages were between first cousins.

The parents were first cousins in 79.4%, paternal grandparents in 76.9% and maternal grandparents in 76.2%. In Swat, 50% or more of parents and over 60% of paternal and maternal grandparents were not related to each other.

RELIGION

Religion



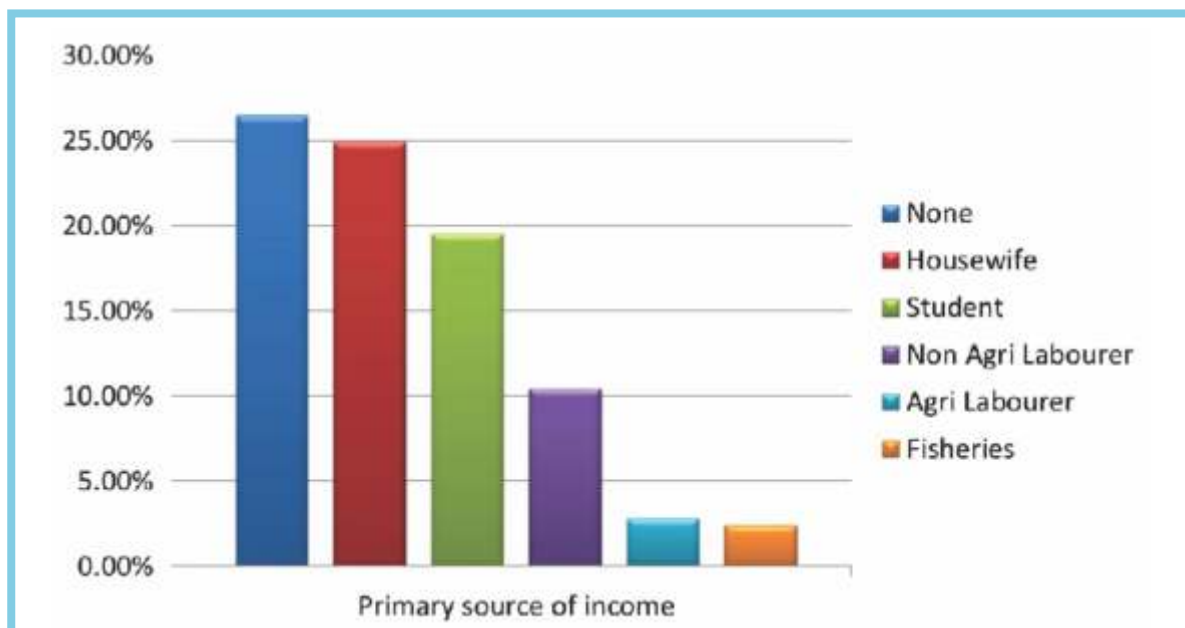
Majority of the people were found to be Muslims. About 5% of people were Hindus and these were all found in Karachi and Khairpur districts. Other religions accounted for less than 1%.

INCOME

Migration for paid wages

Only 2.6% of the population responded positively to migration of more than 3 months for paid wages. The main migration pattern seen was in Rawalakot where migration was found in 12% population in Pachiot and 14.8% in Pakhar. It was not possible to determine from the data whether this migration was seasonal.

Principal source of income

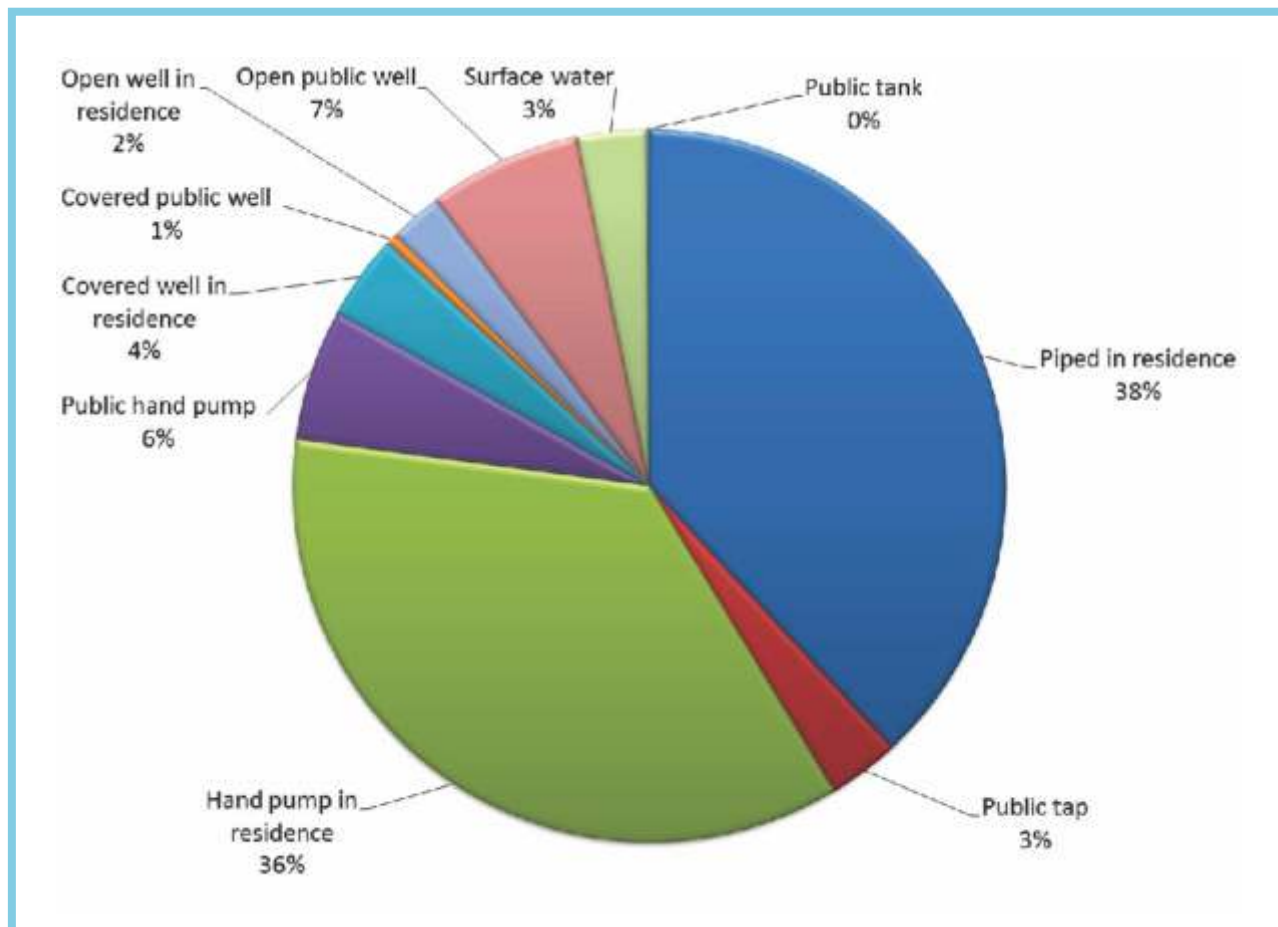


26.5% of respondents said that they had no principle source of income. About 20% were students. Only 2.8% were agri labourers. Fisheries as a source of income was predominantly found in Karachi district.

98.1% of respondents said that they had no secondary source of income.

WATER

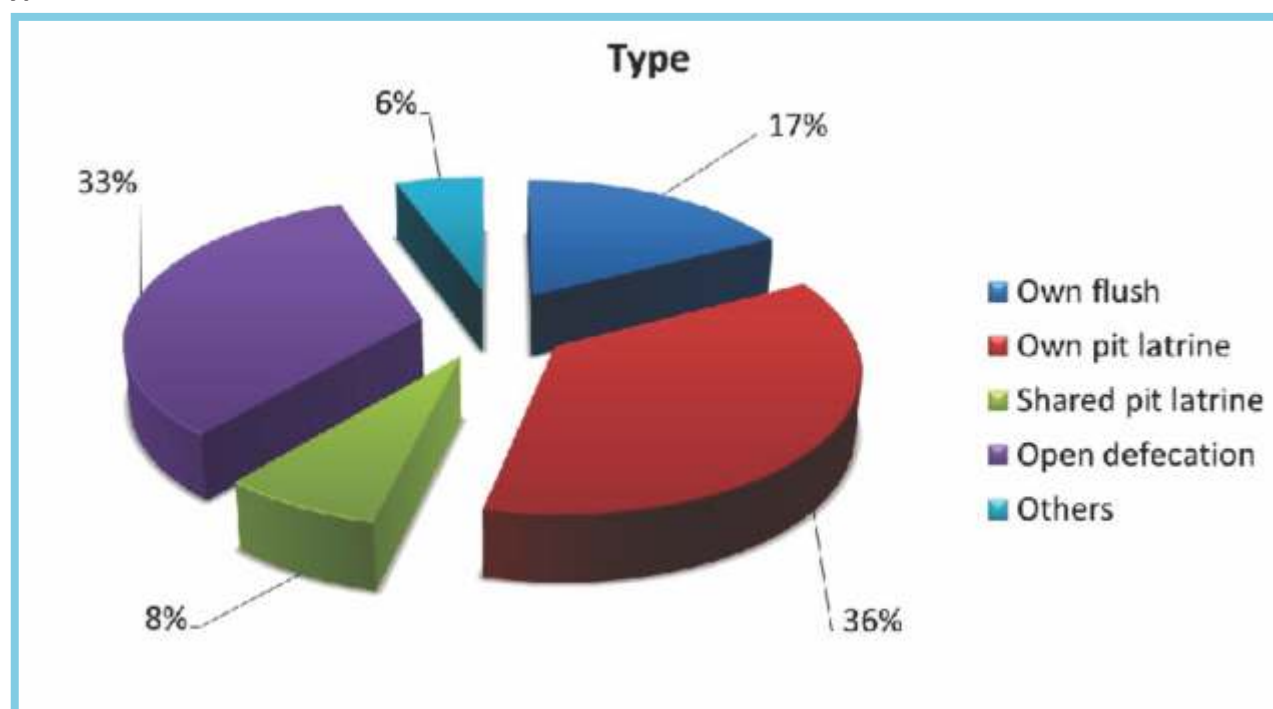
Main source of drinking water



The main source of drinking water was piped in residence in 38% followed by hand pump in residence in 36%. Regional differences were noted e.g. over 80% used a hand pump in residence in union councils surveyed in Multan district, while 67% obtained their water from an open public well in Pachiot in Rawalakot.

SANITATION

Type of Toilet available

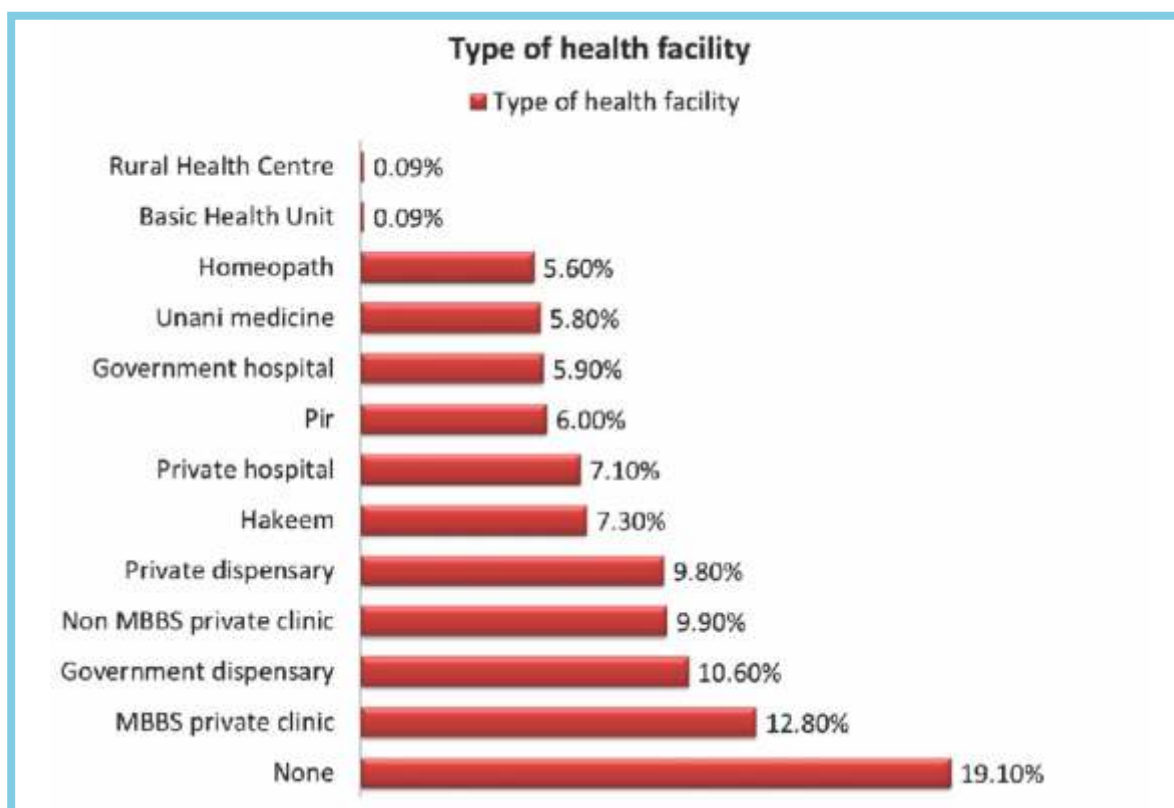


The most common type of toilet found was 'own pit latrine' in 36% of households. Own flush type latrine was found in 17% of households. Of concern was the relatively high proportion of open defecation in 33%.

There were regional variations with least open defecation in Rawalakot which also had high prevalence of own pit latrine (over 70%), while Hill Kot, Satbani, Asota, Panj Koha and Bapho had open defecation rates of over 60%.

HEALTH FACILITIES

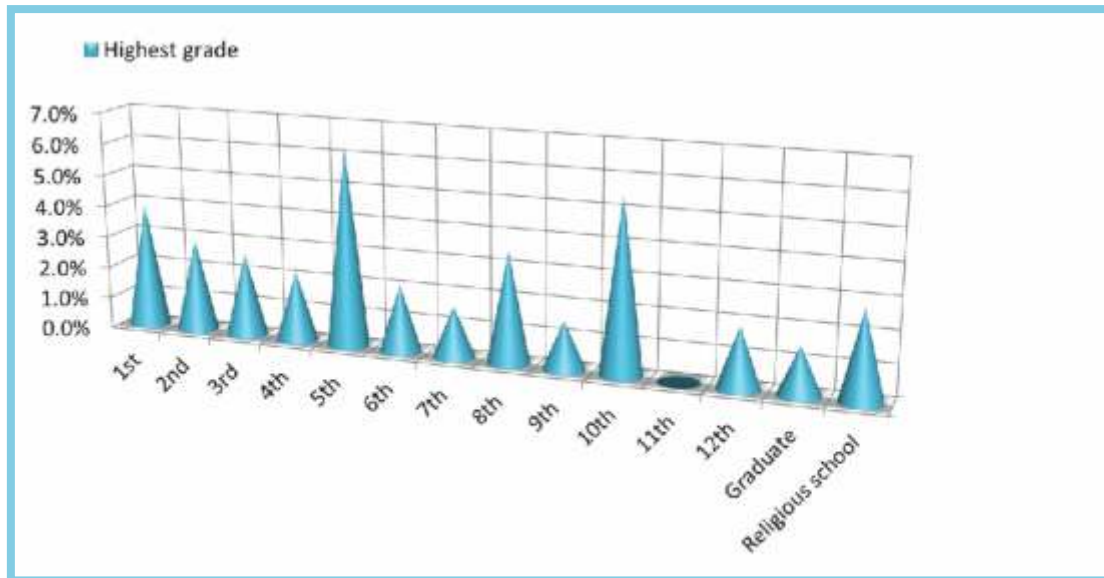
Type of health facility available in village



19.1% of respondents indicated that there was no health facility close to their village. The most common health service provider included MBBS private clinic at 12.8% followed by government dispensary in 10.6%. Private health services accounted for close to 30% available to communities. Alternate health services accounted for 18.7%. 6% of the population still sought health care from Pirs, while non-MBBS private clinics accounted for about 10%. Basic health units and rural health centres featured in less than 0.1% of responses.

EDUCATION

Highest grade in school completed

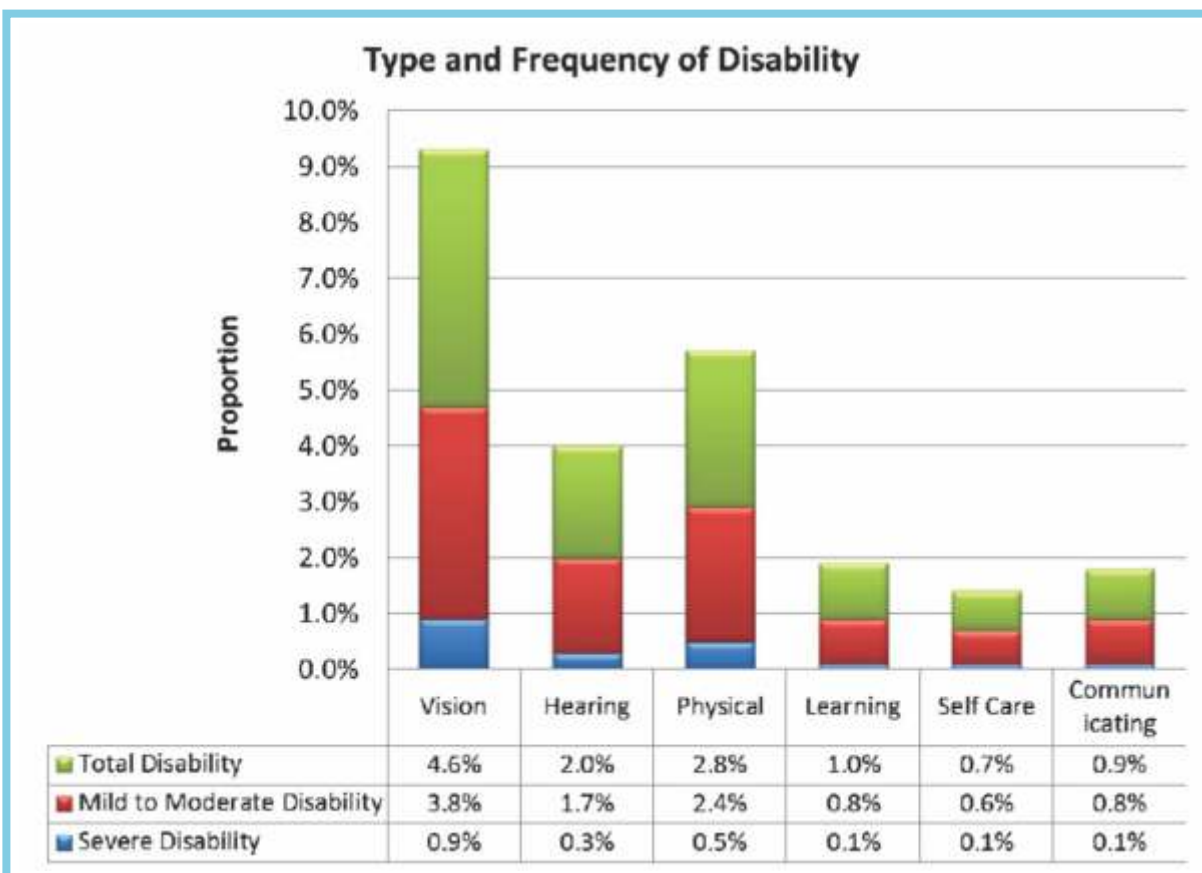


61.3% of the population surveyed responded that they had not attended school at all. The highest grade achieved was 5th at 6.3% followed by 10th at 5.5%. Only 1.9% made it to 12th grade and only 1.5% were graduates. There was regional variation with the highest non-attendance recorded in Saleh Mahay at 79% and the lowest at Pachiot in 19%. The highest attendance at religious schools was at Durana Langana in 11.8%. The highest matriculate and graduate rates were found in Pachiot at 19% and 8.9% respectively.

60.8% of respondents said that there were no schools in their areas. 32.7% of all schools were public (government) schools, followed by private in 3.6%, religious in 2.2% and informal in 0.6%. With regards to vocational or technical education, 97.1% said that there was none available in their areas. 1.2% had attended some form of apprenticeship which was highest in Koza Bandai at 5.8%.

HOUSEHOLD DISABILITY - ALL DISABILITIES

All Disabilities



The most common disability found was visual impairment in 0.9%, followed by physical disability in 0.5% and hearing impairment in 0.3%. Severe disabilities were found to have a prevalence of 2% while mild to moderate disabilities accounted for 10%. All disabilities (severe plus mild to moderate) had a cumulative prevalence of 12%. This implies that every one in fifty Pakistanis has severe disability. 17.5% of disabilities were noted at birth, 8% due to age, and 5.4% were from injuries due to disasters.

PERSONS WITH DISABILITY

This analysis is based on responses of persons with disability.

Marital Status

52.7% of persons with disability are married, while 35.4% are single. A further 11.1% are widows/widowers.

Dependency

28.7% of unmarried persons with disability are dependent on parents.

Participation

73.2% of persons with disability reported that they participated in family activities, while only 52% responded that they participated in community activities.

Visual Impairment

37.3% of persons with visual impairment indicated that they had difficulty in seeing even with glasses.

Hearing Impairment

Of all hearing impaired, 13% indicated that they had difficulty in hearing even with hearing aids, 4.2% said that they had difficulty in speech even with hearing aids, while 2.5% said that they were able to hear but unable to speak.

Physical Disability - lower limbs

0.6% had loss of one limb, 0.4% had loss of both limbs, 1.9% complained of no movement or sensation in one limb, and 3.8% complained of no movement or sensation in both limbs.

5.4% complained that they had less movement or sensation in one limb, 11.7% less movement or sensation in both limbs, 3.9% had deformity of one limb and 2.2% had deformity of both limbs.

Physical Disability - upper limbs

0.4% had loss of one limb, 0.3% had loss of both limbs, 1.2% complained of no movement or sensation in one limb, and 1.8% complained of no movement or sensation in both limbs.

2.7% complained that they had less movement or sensation in one limb, 3.7% less movement or sensation in both limbs, 1.5% had deformity of one limb and 0.9% had deformity of both limbs.

Mental or Behaviour

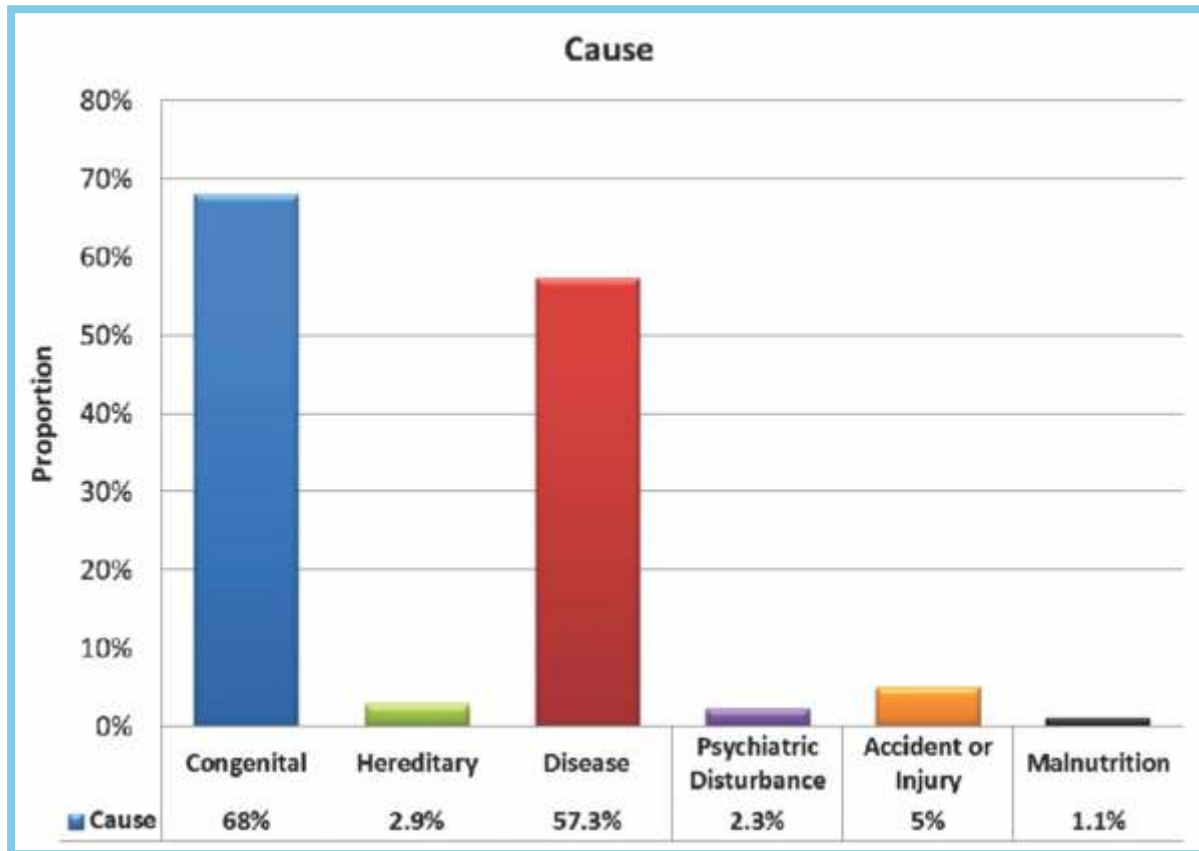
In 6.3% of persons with disability, strange behavior was noted. 2.4% complained of having seizures, 2.6% had difficulty in daily living activities without help, and 1.4% had difficulty in playing and learning with children of the same age.

Slow Learners

5% were found to have a delay in learning new tasks, 4.1% a delay in remembering and concentrating, 4.6% a delay in communication, and 1.2% were noted to play and learn with children of lesser age.

PERSONS WITH DISABILITY - ONSET

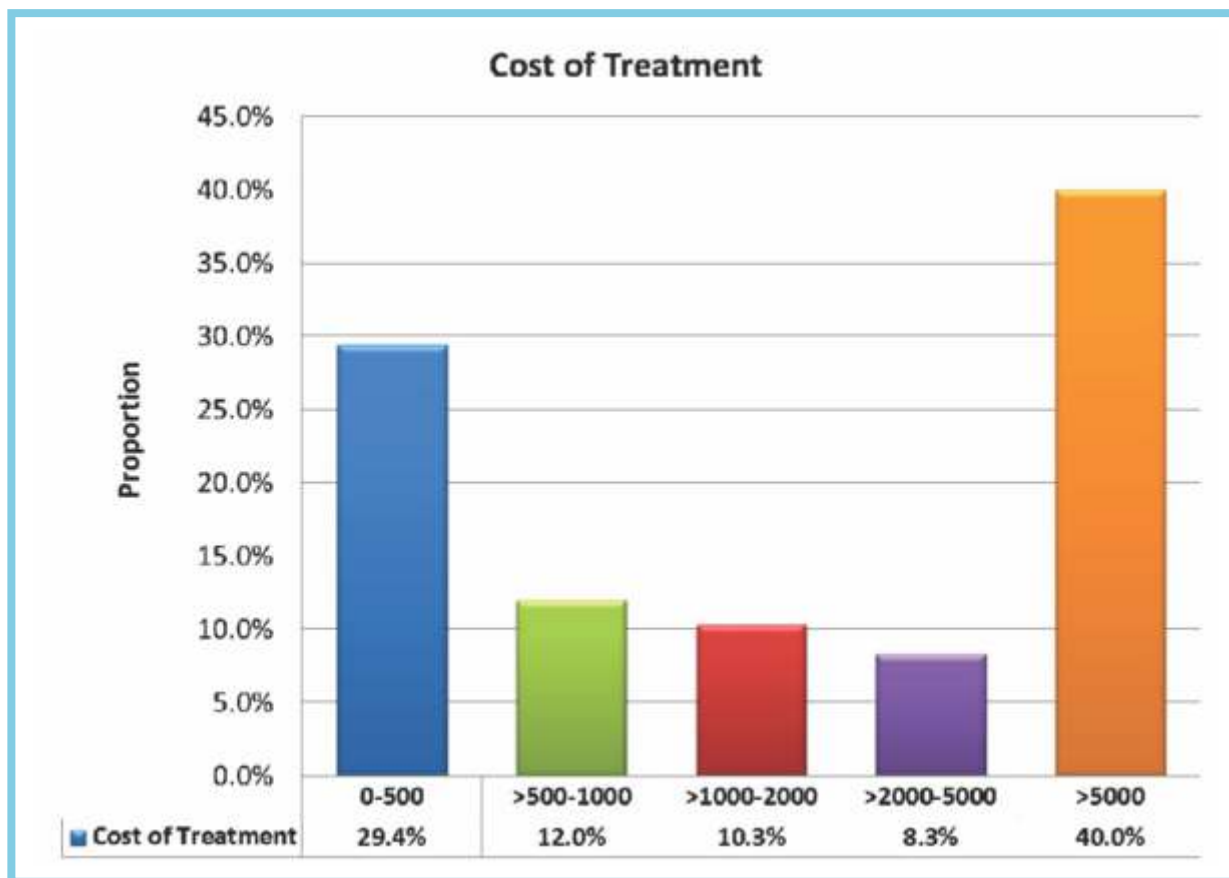
Congenital and Acquired



The most common noted cause was at birth implying a congenital origin in 68% followed by disease in 57.3%. More than one cause was identified in some cases.

COST OF DISABILITY

Cost of treatment for past one year



40% responded that the cost of treatment for the past one year was more than Rupees 5000. 29.4% said that it was between 0 to 500 Rupees.

ANNEXURES

ANNEXURE - HOUSEHOLD INFORMATION

Table - Gender Distribution

		Males	Females	Total
Mansehra	Kawai	7343 (52.3%)	6685 (47.7%)	14028
	Ganool	9221 (54.1%)	7816 (45.9%)	17037
	Hill Kot	9101 (52.2%)	8342 (47.8%)	17443
	Satbani	7511 (51.9%)	6966 (48.1%)	14477
Swabi	Karnal Sher	9071 (53.5%)	7869 (46.5%)	16940
	Asota	7879 (52.7%)	7062 (47.3%)	14941
	Kalu Khan	12835 (52.2%)	11736 (47.8%)	24571
Swat	Tutano Bandai	9690 (52.7%)	8696 (47.3%)	18386
	Kanju	8447 (53.7%)	7290 (46.3%)	15737
	Koza Bandai	10602 (52.6%)	9539 (47.4%)	20141

		Males	Females	Total
Multan	Durana Langana	11605 (52.5%)	10507 (47.5%)	22112
	Binda Sandila	18123 (54.1%)	15354 (45.9%)	33477
	Saleh Mahay	5092 (51.5%)	4804 (48.5%)	9896
	Lutafabad	12493 (53.2%)	10988 (46.8%)	23481
	Panj Koha	12287 (52.8%)	10962 (47.2%)	23249

ANNEXURE - HOUSEHOLD INFORMATION

Table - Gender Distribution continued

		Males	Females	Total
Karachi	Ibrahim Haidri	14258 (51.1%)	13600 (48.8%) (29 others -0.1%)	27887
	Landhi	9923 (51.0%)	9423 (48.4%) (104 others - 0.5%)	19450
	Rehri	10756 (52.0%)	9889 (47.8%) (43 others - 0.2%)	20688
Khairpur	Bapho	7559 (53.3%)	6616 (46.7)	14175
	Kumb	11114 (52.9%)	9903 (47.1%)	21017
	Jishani	6475 (53.3%)	5670 (46.7%)	12145

		Males	Females	Total
Rawalakot	Pachiot	7726 (51.6%)	7257 (48.4%)	14983
	Pakhar	7510 (51.7%)	7006 (48.3%)	14516

		Males	Females	Total
Total		226621 (52.6%)	203980 (47.36%) (176 others - 0.04%)	430777

Note: Figures shown as 'others' are entries other than the given codes. These are included in totals.

ANNEXURE - HOUSEHOLD INFORMATION

Table - Relationship to Head of Household

		Non relative / employee	Head	Spouse	Married child	Son / daughter in law	Unmarried child	Grandchild
Mansehra	Kawai	0	2874 (20.5%)	2532 (18.1%)	61	60	7947 (56.7)	112
	Ganool	93	3239 (19%)	2762 (16.2%)	329	329	9086 (53.4%)	554
	Hill Kot	61	3096 (17.7%)	2920 (16.7%)	484	472	9401 (53.9%)	400
	Satbani	78	3132 (21.6%)	2859 (19.7%)	115	126	7497 (51.8%)	135
Swabi	Karnal Sher	0	2811 (16.6%)	2491 (14.7%)	740	740	8062 (47.6%)	1071
	Asota	51	2201 (14.7)	1988 (13.3%)	691	668	7812 (52.3%)	920
	Kalu Khan	9	4022 (16.4%)	3763 (15.3%)	659	667	12940 (52.7%)	980
Swat	Tutano Bandai	1	2313 (12.6%)	2210 (12.0%)	1089	1073	8319 (45.2%)	1718
	Kanju	6	2036 (12.9%)	1958 (12.4%)	904	903	7007 (44.5%)	1782
	Koza Bandai	40	2592 (12.9%)	2467 (12.2%)	1295	1289	8878 (44.1%)	2497

		Non relative / employee	Head	Spouse	Married child	Son / daughter in law	Unmarried child	Grandchild
Multan	Durana Langana	1	4263 (19.3%)	3849 (17.4%)	379	350	11289 (51.1%)	711
	Binda Sandila	0	7520 (22.5%)	6770 (20.2%)	313	262	17533 (52.4%)	523
	Saleh Mahay	0	2167 (21.9%)	1763 (17.8%)	150	84	5293 (53.5%)	162
	Lutafabad	63	4520 (19.2%)	4277 (18.2%)	318	224	12913 (55.0%)	709
	Panj Koha	75	4459 (19.2%)	4099 (17.6%)	478	414	11577 (49.8%)	730

ANNEXURE - HOUSEHOLD INFORMATION

Table - Relationship to Head of Household continued

		Non relative / employee	Head	Spouse	Married child	Son / daughter in law	Unmarried child	Grandchild
Karachi	Ibrahim Haidri	155	4282 (15.4%)	3595 (12.9%)	1123	1074	13220 (47.4%)	1708
	Landhi	225	3196 (16.4%)	2910 (14.9%)	543	505	9842 (50.6%)	790
	Rehri	213	3546 (17.1%)	3226 (15.6%)	731	674	9843 (47.6%)	1134
Khairpur	Bapho	115	2285 (16.1%)	2189 (15.4%)	442	430	6671 (47.1%)	646
	Kumb	300	3733 (17.8%)	3404 (16.2%)	536	504	10301 (49.0%)	817
	Jishani	47	2087 (17.2%)	1923 (15.8%)	216	201	6435 (53.0%)	347

		Non relative / employee	Head	Spouse	Married child	Son / daughter in law	Unmarried child	Grandchild
Rawalakot	Pachiot	1	3064 (20.4%)	2600 (17.4%)	383	367	7682 (51.3%)	433
	Pakhar	3	2596 (17.9%)	2325 (16.0%)	501	448	7278 (50.1%)	592

		Non relative / employee	Head	Spouse	Married child	Son / daughter in law	Unmarried child	Grandchild
Total		1537	76034 (17.7%)	68880 (16.0%)	12480	11864	216826 (50.3%)	19471

ANNEXURE - HOUSEHOLD INFORMATION

Table - Relationship to Head of Household continued

		Parent	Parent in law	Brother / sister in law	Brother / sister	Grand-parent	Niece / nephew	Cousin
Mansehra	Kawai	186	8	11	191	4	36	4
	Ganool	233	15	31	264	3	69	10
	Hill Kot	226	5	56	238	2	54	3
	Satbani	284	3	7	194	5	25	7
Swabi	Karnal Sher	235	5	130	427	18	187	2
	Asota	180	12	72	212	6	105	7
	Kalu Khan	488	2	132	709	13	149	26
Swat	Tutano Bandai	282	4	276	561	15	478	8
	Kanju	271	4	132	417	6	265	8
	Koza Bandai	278	9	135	322	8	280	3

		Parent	Parent in law	Brother / sister in law	Brother / sister	Grand-parent	Niece / nephew	Cousin
Multan	Durana Langana	561	45	65	382	52	105	15
	Binda Sandila	268	21	14	168	19	54	3
	Saleh Mahay	147	21	11	75	6	9	0
	Lutafabad	365	12	0	9	12	44	4
	Panj Koha	500	50	91	527	14	164	4

ANNEXURE - HOUSEHOLD INFORMATION

Table - Relationship to Head of Household continued

		Parent	Parent in law	Brother / sister in law	Brother / sister	Grand-parent	Niece / nephew	Cousin
Karachi	Ibrahim Haidri	496	29	266	1330	5	500	26
	Landhi	373	31	131	578	13	226	11
	Rehri	339	46	120	502	28	226	12
Khairpur	Bapho	172	24	98	620	28	271	83
	Kumb	398	28	101	503	13	166	52
	Jishani	99	25	26	278	10	69	202

		Parent	Parent in law	Brother / sister in law	Brother / sister	Grand-parent	Niece / nephew	Cousin
Rawalakot	Pachiot	92	11	29	178	51	58	1
	Pakhar	214	41	52	235	6	81	6

		Parent	Parent in law	Brother / sister in law	Brother / sister	Grand-parent	Niece / nephew	Cousin
Total		6687	451	1986	8920	337	3621	497

ANNEXURE - HOUSEHOLD INFORMATION

Table - Relationship to Head of Household continued

		Parent	Parent in law	Brother / sister in law	Brother / sister	Grand-parent	Niece / nephew	Cousin
Mansehra	Kawai	186	8	11	191	4	36	4
	Ganool	233	15	31	264	3	69	10
	Hill Kot	226	5	56	238	2	54	3
	Satbani	284	3	7	194	5	25	7
Swabi	Karnal Sher	235	5	130	427	18	187	2
	Asota	180	12	72	212	6	105	7
	Kalu Khan	488	2	132	709	13	149	26
Swat	Tutano Bandai	282	4	276	561	15	478	8
	Kanju	271	4	132	417	6	265	8
	Koza Bandai	278	9	135	322	8	280	3

		Parent	Parent in law	Brother / sister in law	Brother / sister	Grand-parent	Niece / nephew	Cousin
Multan	Durana Langana	561	45	65	382	52	105	15
	Binda Sandila	268	21	14	168	19	54	3
	Saleh Mahay	147	21	11	75	6	9	0
	Lutafabad	365	12	0	9	12	44	4
	Panj Koha	500	50	91	527	14	164	4

ANNEXURE - HOUSEHOLD INFORMATION

Table - Relationship to Head of Household continued

		Parent	Parent in law	Brother / sister in law	Brother / sister	Grand-parent	Niece / nephew	Cousin
Karachi	Ibrahim Haidri	496	29	266	1330	5	500	26
	Landhi	373	31	131	578	13	226	11
	Rehri	339	46	120	502	28	226	12
Khairpur	Bapho	172	24	98	620	28	271	83
	Kumb	398	28	101	503	13	166	52
	Jishani	99	25	26	278	10	69	202

		Parent	Parent in law	Brother / sister in law	Brother / sister	Grand-parent	Niece / nephew	Cousin
Rawalakot	Pachiot	92	11	29	178	51	58	1
	Pakhar	214	41	52	235	6	81	6

		Parent	Parent in law	Brother / sister in law	Brother / sister	Grand-parent	Niece / nephew	Cousin
Total		6687	451	1986	8920	337	3621	497

Note: Figures shown as 'others' are entries other than the given codes. These are included in totals.

ANNEXURE - EDUCATION

Table - Highest Grade in School Completed

		None	1 st	2 nd	3 rd	4 th	5 th	6 th	7 th	8 th	9 th	10 th	11 th	12 th	Grad	Rel	Total
Manshehra	Kawai	8505 (60.7%)	373	429	394	348	1605	261	182	649	150	716	27	182	116	86	14023
	Ganool	7470 (43.9%)	797	459	484	581	2510	434	364	1177	225	1746	56	368	298	40	17009
	Hill Kot	12965 (74.3%)	475	433	433	382	977	264	146	451	118	474	35	147	76	63	17439
	Satbani	8873 (61.3%)	602	585	492	329	1545	336	133	535	92	554	20	137	49	196	14478
	Karnal Sher	8216 (53.8%)	741	550	547	2	517	549	487	4	771	1575	150	565	579	8	15261
Swabi	Asota	9420 (63.0%)	546	400	440	421	684	431	327	493	269	902	75	242	264	27	14941
	Kalu Khan	11462 (46.6%)	1019	891	795	781	1224	779	666	1395	646	2906	178	734	983	113	24572
	Tutano Bandai	10118 (55.0%)	1125	786	835	768	1030	702	471	546	375	821	109	345	257	98	18386
Swat	Kanju	7685 (48.8%)	924	585	565	638	808	629	472	590	429	995	86	458	350	523	15737
	Koza Bandai	11079 (55.6%)	1220	700	620	712	932	706	533	696	401	1086	144	496	319	288	19932

ANNEXURE - EDUCATION

Table - Highest Grade in School Completed

		None	1 st	2 nd	3 rd	4 th	5 th	6 th	7 th	8 th	9 th	10 th	11 th	12 th	Grad	Rel	Total
Multan	Durana Langana	13987 (63.0%)	652	520	602	499	1450	282	217	556	173	421	40	113	60	2630	22202
	Binda Sandila	25494 (76.2%)	560	642	626	470	1368	284	185	494	149	416	20	141	82	2545	33476
	Saleh Mahay	7814 (79.0%)	228	186	150	155	354	100	75	208	77	218	26	60	54	190	9895
	Lutafabad	18311 (78.0%)	445	311	469	318	1276	277	206	475	173	800	40	155	85	141	23482
	Panj Koha	13453 (57.9%)	789	705	806	710	1879	370	279	701	259	585	52	181	69	2408	23246

ANNEXURE - EDUCATION

Table - Highest Grade in School Completed

		None	1 st	2 nd	3 rd	4 th	5 th	6 th	7 th	8 th	9 th	10 th	11 th	12 th	Grad	Rel	Total
Karachi	Ibrahim Haidri	21384 (76.7%)	692	516	514	346	969	293	287	464	213	691	42	202	79	1185	27877
	Landhi	12796 (66.0%)	715	569	464	389	1111	389	314	691	166	1188	23	338	121	123	19397
	Rehri	16181 (78.3%)	619	497	402	251	600	167	158	357	79	333	12	87	34	894 (7 others)	20678
Khairpur	Bapho	9226 (65.1%)	681	387	272	231	1068	188	169	368	99	739	27	401	152	166	14174
	Kumb	13437 (64.0%)	1237	538	353	364	1511	329	302	452	193	1018	87	647	463	59	20990
	Jishani	7762 (63.9%)	562	270	238	152	882	184	173	326	95	650	56	402	375	18	12145

ANNEXURE - EDUCATION

Table - Highest Grade in School Completed

		None	1 st	2 nd	3 rd	4 th	5 th	6 th	7 th	8 th	9 th	10 th	11 th	12 th	Grad	Rel	Total
Rawalakot																	
	Pachiot	2866 (19.1%)	877	455	363	332	1477	449	318	1831	550	2855	90	1147	1338	34	14982
	Pakhar	4428 (30.5%)	885	877	454	462	1348	582	417	1453	572	1926	79	482	404	146	14515

	None	1 st	2 nd	3 rd	4 th	5 th	6 th	7 th	8 th	9 th	10 th	11 th	12 th	Grad	Rel	Total
Total																
	262932 (61.3%)	16764 (3.9%)	12291 (2.9%)	11318 (2.6%)	9641 (2.2%)	27125 (6.3%)	8985 (2.1%)	6881 (1.6%)	14912 (3.5%)	6274 (1.5%)	23615 (5.5%)	1474 (0.0%)	8030 (1.9%)	6607 (1.5%)	11981 (2.8%)	428830

ANNEXURE - EDUCATION

Table - Type of School

		None	Public	Private	Special	Informal	Religious	Inclusive	Other	Total
Manshara	Kawai	8560 (61.0%)	5377 (38.3%)	20	0	0	65	1	0	14023
	Ganool	7681 (45.2%)	9213 (54.2%)	17	0	9	83	0	0	17003
	Hill Kot	13016 (74.6%)	4365 (25.0%)	5	0	1	56	0	0	17443
	Satbani	9016 (62.3%)	5245 (36.2%)	22	0	16	177	0	0	14476
	Karnal Sher	8251 (48.7%)	8192 (48.4%)	475	2	10	8	1	1	16940
Swabi	Asota	9443 (63.2%)	5339 (35.7%)	128	2	4	20	0	5	14941
	Kalu Khan	11329 (46.1%)	12048 (49.0%)	1043	0	42	107	0	3	24572
	Tutano Bandai	10153 (52.2%)	7290 (39.6%)	860	0	0	83	0	0	18386
Swat	Kanju	7710 (49.0%)	6110 (38.8%)	1387	7	0	521	1	0	15736
	Koza Bandai	11132 (55.3%)	6969 (34.6%)	1528	5	19	485	1	2	20141

ANNEXURE - EDUCATION

Table - Type of School

		None	Public	Private	Special	Informal	Religious	Inclusive	Other	Total
Muktan	Durana Langana	13937 (63.0%)	4850 (21.9%)	670	15	9	2631	0	0	22112
	Binda Sandila	25356 (75.7%)	4515 (13.5%)	1090	13	2503	0	0	0	33477
	Saleh Mahay	7880 (79.6%)	1687 (17.0%)	132	1	0	194	1	1	9896
	Lutafabad	18338 (78.1%)	4976 (21.2%)	107	0	3	57	0	0	23481
	Panj Koha	13478 (58.0%)	6289 (27.1%)	1067	4	13	2388	0	0	23239

ANNEXURE - EDUCATION

Table - Type of School

		None	Public	Private	Special	Informal	Religious	Inclusive	Other	Total
Karachi	Ibrahim Haidri	21496 (77.1%)	4414 (15.8%)	786	1	1	1173	1	4	27876
	Landhi	13037 (67.1%)	4901 (25.2%)	1304	3	33	100	2	3 (32 others)	19415
	Rehri	16226 (78.6%)	2312 (11.2%)	1197	1	13	882	7	2 (11 others)	20651
	Bapho	9417 (66.4%)	4628 (32.7%)	72	1	7	46	1	2	14174
Khairpur	Kumb	13861 (66.1%)	6746 (32.2%)	300	2	4	22	1	23	20959
	Jishani	7924 (65.2%)	4023 (33.1%)	197	0	0	0	0	1	12145

ANNEXURE - EDUCATION

Table - Type of School

		None	Public	Private	Special	Informal	Religious	Inclusive	Other	Total
Rawalakot	Pachiot	57	8416 (83.4%)	1454	27	3	107	4	25	10093
	Pakhar	136	10596 (87.4%)	1364	2	0	20	0	0	12118

	None	Public	Private	Special	Informal	Religious	Inclusive	Other	Total
Total	257434 (60.8%)	138501 (32.7%)	15225 (3.6%)	86	2690 (0.6%)	9225 (2.2%)	21	115	423297

ANNEXURE - EDUCATION

Table - Vocational or Technical Training

		None	Public	Informal / NGO	Apprenticeship	Other	Total
Mansehra	Kawai	13587 (96.9%)	249	27	147	9	14019
	Ganool	16909 (99.5%)	66	11	5	7	16998
	Hill Kot	17424 (99.9%)	10	5	0	0	17439
	Satbani	14378 (99.4%)	12	5	69	7	14471
Swabi	Karnal Sher	16629 (98.2%)	28	14	269	0	16940
	Asota	14901 (99.7%)	34	0	6	0	14941
	Kalu Khan	24424 (99.4%)	48	71	23	0	24566
Swat	Tutano Bandai	17054 (92.8%)	82	4	1246	0	18386
	Kanju	13502 (85.8%)	20	7	119	2089 (13.3%)	15737
	Koza Bandai	18013 (89.2%)	60	6	1179 (5.8%)	933	20191

		None	Public	Informal / NGO	Apprenticeship	Other	Total
Multan	Durana Langana	21878 (98.9%)	23	2	203	6	22112
	Binda Sandila	32151 (96.0%)	2	1323	1	0	33477
	Saleh Mahay	9799 (99.0%)	28	7	61	1	9896
	Lutafabad	23270 (99.1%)	15	102	9	86	23482
	Panj Koha	23039 (99.1%)	25	2	172	7	23245

ANNEXURE - EDUCATION

Table - Vocational or Technical Training

		None	Public	Informal / NGO	Apprenticeship	Other	Total
Karachi	Ibrahim Haidri	27282 (97.8%)	31	203	366	3	27885
	Landhi	19259 (99.1%)	87	74	3	5	19428
	Rehri	20540 (99.5%)	22	32	29	20	20643
Khairpur	Bapho	14075 (99.3%)	97	1	1	0	14174
	Kumb	20808 (99.1%)	118	20	37	6	20989
	Jishani	12133 (100%)	0	2	0	0	12135

		None	Public	Informal / NGO	Apprenticeship	Other	Total
Rawalakot	Pachiot	14163 (94.5%)	243	473	89	15	14983
	Pakhar	13095 (90.2%)	181	210	928	101	14515

		None	Public	Informal / NGO	Apprenticeship	Other	Total
Total		418313 (97.1%)	1481	2601	4962 (1.2%)	3295	430652

ANNEXURE - INCOME

Table - Migration for Paid Wages

		No (less than 3 months)	Yes (more than 3 months)	Total
Mansehra	Kawai	13788 (98.3%)	238	14026
	Ganool	16946 (99.7%)	56	17002
	Hill Kot	17053 (97.8%)	387	17440
	Satbani	14257 (98.5%)	217	14474
Swabi	Karnal Sher	16460 (97.2%)	480	16940
	Asota	14461 (96.8%)	480	14941
	Kalu Khan	23060 (93.9%)	1508	24568
Swat	Tutano Bandai	17072 (92.9%)	1314	18386
	Kanju	14856 (94.4%)	881	15737
	Koza Bandai	18935 (94.0%)	1206	20141

		No (less than 3 months)	Yes (more than 3 months)	Total
Multan	Durana Langana	22097 (99.9%)	15	22112
	Binda Sandila	33474 (100%)	1	33475
	Saleh Mahay	9877 (99.8%)	19	9896
	Lutafabad	23456 (99.9%)	25	23481
	Panj Koha	23219 (99.9%)	29	23248

ANNEXURE - INCOME

Table - Migration for Paid Wages

		No (less than 3 months)	Yes (more than 3 months)	Total
Karachi	Ibrahim Hai-dri	27873 (99.9%)	14	27887
	Landhi	19303 (99.2%)	135 (18 more)	19456
	Rehri	20627 (99.9%)	8 (10 others)	20645
Khairpur	Bapho	14131 (99.7%)	43	14174
	Kumb	20888 (99.5%)	113	21001
	Jishani	12130 (100%)	2	12132

		No (less than 3 months)	Yes (more than 3 months)	Total
Rawalakot	Pachiot	13185 (88.0%)	1799 (12%)	14984
	Pakhar	12362 (85.2%)	2154 (14.8%)	14516

		No (less than 3 months)	Yes (more than 3 months)	Total
Total		419510 (97.4%)	11124 (2.6%)	430634

ANNEXURE - INCOME

Table - Principal Source of Income

		None	Housewife	Retired (pension)	Retired (no pension)	Student	Agri laborer	Non-agri laborer
Mansehra	Kawai	3968 (28.3%)	3420 (24.4%)	12	0	2813 (20.1%)	248	1923 (13.7%)
	Ganool	3374 (19.8%)	4305 (25.3%)	38	1	4745 (27.9%)	1383	1707 (10.0%)
	Hill Kot	5301 (30.4%)	4858 (27.9%)	14	0	2684 (15.4%)	1899 (10.9%)	1950 (11.2%)
	Satbani	2629 (18.2%)	4091 (28.3%)	11	1	3384 (23.4%)	22	944
Swabi	Karnal Sher	2910 (17.2%)	4469 (26.4)	89	1	4338 (25.6%)	259	1725
	Asota	3868 (25.9%)	4202 (28.1%)	23	1	2855 (19.1%)	807	1731
	Kalu Khan	5985 (24.4%)	4935 (20.1%)	174	0	6819 (27.8%)	549	1196
Swat	Tutano Bandai	3899 (21.2%)	4091 (22.3%)	16	15	4891 (26.6%)	367	900
	Kanju	3646 (23.2%)	3820 (24.3%)	28	16	4280 (27.2%)	731	648
	Koza Bandai	5314 (26.4%)	4819 (23.9%)	25	19	4936 (24.5%)	634	1029

ANNEXURE - INCOME

Table - Principal Source of Income continued

		None	Housewife	Retired (pension)	Retired (no pension)	Student	Agri laborer	Non-agri laborer
Multan	Durana Langana	6339 (28.7%)	5539 (25.0%)	11	2	3793 (17.2%)	392	4336 (19.6%)
	Binda Sandila	10873 (32.4%)	7306 (21.8%)	35	6	3904 (11.6%)	1345	7225 (21.5%)
	Saleh Mahay	3737 (37.9%)	2253 (22.8%)	17	1	1130 (11.5%)	68	2086 (21.2%)
	Lutafabad	7973 (34.0%)	5428 (23.1%)	7	4	3144 (13.4%)	690	5520 (23.5%)
	Panj Koha	5630 (24.2%)	6135 (26.4%)	10	2	4597 (19.8%)	432	4413 (19.0%)

		None	Housewife	Retired (pension)	Retired (no pension)	Student	Agri laborer	Non-agri laborer
Karachi	Ibrahim Haidri	7523 (27.0%)	8053 (28.9%)	7	7	2933 (10.5%)	21	563
	Landhi	6575 (33.9%)	4835 (24.9%)	37	3	2716 (14.0%)	735	470
	Rehri	6732 (32.6%)	5380 (26.0%)	12	3	2288 (11.1%)	5	261
Khairpur	Bapho	4204 (29.7%)	3676 (25.9%)	22	2	2558 (18.1%)	441	1273
	Kumb	7077 (33.7%)	5125 (24.4%)	35	10	3601 (17.1%)	942	2161 (10.3%)
	Jishani	3862 (31.8%)	3100 (25.5%)	38	2	2129 (17.5%)	171	1506 (12.4%)

ANNEXURE - INCOME

Table - Principal Source of Income continued

		None	Housewife	Retired (pension)	Retired (no pension)	Student	Agri laborer	Non-agri laborer
Rawalakot	Pachiot	845	3858 (25.7%)	140	7	4746 (31.7%)	10	727
	Pakhar	1971 (13.6%)	3544 (24.4%)	119	12	4556 (31.4%)	12	627

		None	Housewife	Retired (pension)	Retired (no pension)	Student	Agri laborer	Non-agri laborer
Total		114235 (26.5%)	107242 (24.9%)	920	115	83840 (19.5%)	12163 (2.8%)	44921 (10.4%)

ANNEXURE - INCOME

Table - Principal Source of Income continued

		Domestic work	Cultivator	Petty business	Govt employee	Non-govt salaried worker	Cottage industry	Rent / remittance
Mansehra	Kawai	1	175	175	134	277	182	23
	Ganool	1	4	84	339	461	22	33
	Hill Kot	0	51	33	144	93	4	64
	Satbani	1	1140	54	86	153	1302	33
Swabi	Karnal Sher	42	263	801	461	560	294	176
	Asota	1	279	242	202	81	13	503
	Kalu Khan	1	903	559	1554	879	285	125
Swat	Tutano Bandai	17	799	260	201	81	101	1312
	Kanju	0	118	414	170	256	36	942
	Koza Bandai	14	781	316	139	117	195	1175

		Domestic work	Cultivator	Petty business	Govt employee	Non-govt salaried worker	Cottage industry	Rent / remittance
Multan	Durana Langana	86	199	324	141	316	230	4
	Binda Sandila	304	450	504	198	298	795	17
	Saleh Mahay	55	34	117	61	69	54	1
	Lutafabad	33	54	269	155	124	21	6
	Panj Koha	24	402	311	159	487	180	3

ANNEXURE - INCOME

Table - Principal Source of Income continued

		Domestic work	Cultivator	Petty business	Govt employee	Non-govt salaried worker	Cottage industry	Rent / remittance
Karachi	Ibrahim Haidri	185	7	313	103	635	276	4
	Landhi	68	59	612	378	1233	140	158
	Rehri	28	2	275	87	507	105	16
Khairpur	Bapho	9	1140	114	270	162	59	1
	Kumb	11	256	472	444	259	29	1
	Jishani	17	236	162	428	132	36	4

		Domestic work	Cultivator	Petty business	Govt employee	Non-govt salaried worker	Cottage industry	Rent / remittance
Rawalakot	Pachiot	0	4	514	348	210	37	1106
	Pakhar	3	7	457	271	342	42	1029

		Domestic work	Cultivator	Petty business	Govt employee	Non-govt salaried worker	Cottage industry	Rent / remittance
Total		901	7363	7382	6473	7732	4438	6736

ANNEXURE - INCOME

Table - Principal Source of Income continued

		Not working but available for work	Not available for work (other than retired)	Alms and charity	Fisheries	Other	Total
Mansehra	Kawai	292	364	1	0	4	14012
	Ganool	435	22	39	0	12	17005
	Hill Kot	119	0	179	49	0	17442
	Satbani	279	293	36	13	2	14474
Swabi	Karnal Sher	279	229	36	0	7	16939
	Asota	71	56	11	0	4	14950
	Kalu Khan	439	121	29	3	11	24567
Swat	Tutano Bandai	1189	188	27	0	32	18386
	Kanju	47	4	36	0	545	15737
	Koza Bandai	316	137	30	0	145	20141

		Not working but available for work	Not available for work (other than retired)	Alms and charity	Fisheries	Other	Total
Multan	Durana Langana	63	194	81	5	57	22112
	Binda Sandila	29	9	58	0	220	33576
	Saleh Mahay	67	7	86	0	19	9862
	Lutafabad	8	4	28	0	12	23480
	Panj Koha	117	278	26	4	32	23242

ANNEXURE - INCOME

Table - Principal Source of Income continued

		Not working but available for work	Not available for work (other than retired)	Alms and charity	Fisheries	Other	Total
Karachi	Ibrahim Hai-dri	135	286	31	6319 (22.7%)	474	27875
	Landhi	556	166	23	21	632	19417
	Rehri	193	324	31	3808 (18.4%)	607	20664
Khairpur	Bapho	237	0	0	0	0	14168
	Kumb	565	3	6	2	4	21003
	Jishani	315	0	0	0	0	12138

		Not working but available for work	Not available for work (other than retired)	Alms and charity	Fisheries	Other	Total
Rawalakot	Pachiot	1373	27	65	0	966	14983
	Pakhar	888	451	24	5	156	14516

		Not working but available for work	Not available for work (other than retired)	Alms and charity	Fisheries	Other	Total
Total		8012	3163	883	10229 (2.4%)	3941	430689

ANNEXURE - INCOME

Table - Secondary Source of Income

		None	House- wife	Retired (pension)	Retired (no pension)	Student	Agri laborer	Non-agri laborer
Mansehra	Kawai	13814 (98.9%)	44	2	0	8	2	0
	Ganool	16602 (98.1%)	80	0	0	8	6	0
	Hill Kot	17304 (99.2%)	55	1	0	10	10	10
	Satbani	14029 (97.0%)	68	0	0	12	6	1
Swabi	Karnal Sher	16479 (97.3%)	75	6	0	31	13	56
	Asota	14873 (99.5%)	34	0	0	11	8	11
	Kalu Khan	24233 (98.6%)	22	168	0	7	22	18
Swat	Tutano Ban- dai	18309 (99.6%)	23	0	0	3	0	2
	Kanju	15395 (97.8%)	22	3	0	10	61	12
	Koza Bandai	19728 (97.9%)	40	5	1	22	42	44

ANNEXURE - INCOME

Table - Secondary Source of Income continued

		None	House-wife	Retired (pension)	Retired (no pension)	Student	Agri laborer	Non-agri laborer
Multan	Durana Langana	21112 (95.5%)	108	0	0	5	711	34
	Binda Sandila	31515 (94.0%)	217	3	2	13	657	62
	Saleh Mahay	9695 (98.0%)	109	2	0	4	25	20
	Lutafabad	23431 (99.8%)	30	3	0	2	2	7
	Panj Koha	22138 (95.3%)	167	0	0	18	729	78

		None	House-wife	Retired (pension)	Retired (no pension)	Student	Agri laborer	Non-agri laborer
Karachi	Ibrahim Haidri	27766 (99.6%)	49	1	7	9	5	1
	Landhi	19382 (99.6%)	44	1	0	1	9	0
	Rehri	20598 (99.6%)	52	0	1	5	3	0
Khairpur	Bapho	14060 (99.2%)	83	1	0	10	3	10
	Kumb	20867 (99.4%)	108	1	1	10	5	5
	Jishani	12128 (100%)	4	0	0	0	0	0

ANNEXURE - INCOME

Table - Secondary Source of Income continued

		None	House- wife	Retired (pension)	Retired (no pension)	Student	Agri laborer	Non-agri laborer
Rawalakot	Pachiot	14830 (99.0%)	132	9	0	0	0	0
	Pakhar	14128 (97.4%)	242	18	0	51	10	5

		None	House- wife	Retired (pension)	Retired (no pension)	Student	Agri laborer	Non-agri laborer
Total		422416 (98.1%)	1808	224	12	250	2329	376

ANNEXURE - INCOME

Table - Secondary Source of Income continued

		Domestic work	Cultivator	Petty business	Govt employee	Non-govt salaried worker	Cottage industry	Rent / remittance
Mansehra	Kawai	21	5	5	7	5	9	2
	Ganool	0	1	3	0	0	0	0
	Hill Kot	0	18	1	1	0	2	0
	Satbani	0	5	2	0	27	299	0
Swabi	Karnal Sher	5	44	59	9	10	95	3
	Asota	0	0	1	0	0	0	3
	Kalu Khan	56	13	2	6	2	11	0
Swat	Tutano Bandai	1	7	3	1	2	33	0
	Kanju	0	7	19	2	3	45	0
	Koza Bandai	3	112	11	3	6	98	5

		Domestic work	Cultivator	Petty business	Govt employee	Non-govt salaried worker	Cottage industry	Rent / remittance
Multan	Durana Langana	14	29	6	2	1	56	0
	Binda Sandila	62	136	11	39	3	8	759
	Saleh Mahay	3	0	3	0	1	25	0
	Lutafabad	0	1	2	0	0	0	0
	Panj Koha	3	42	9	3	2	10	0

ANNEXURE - INCOME

Table - Secondary Source of Income continued

		Domestic work	Cultivator	Petty business	Govt employee	Non-govt salaried worker	Cottage industry	Rent / remittance
Karachi	Ibrahim Haidri	1	8	1	6	9	1	5
	Landhi	0	0	1	0	2	16	1
	Rehri	1	0	0	2	1	2	0
Khairpur	Bapho	0	3	0	0	0	0	0
	Kumb	0	0	0	1	0	0	0
	Jishani	0	0	0	0	0	0	0

		Domestic work	Cultivator	Petty business	Govt employee	Non-govt salaried worker	Cottage industry	Rent / remittance
Rawalakot	Pachiot	0	0	0	0	0	0	1
	Pakhar	0	0	5	6	6	3	21

		Domestic work	Cultivator	Petty business	Govt employee	Non-govt salaried worker	Cottage industry	Rent / remittance
Total		170	431	144	88	80	713	800

ANNEXURE - INCOME

Table - Secondary Source of Income continued

		Not working but available for work	Not available for work (other than retired)	Alms and charity	Fisheries	Other	Total
Mansehra	Kawai	1	40	0	2	0	13967
	Ganool	0	229	0	0	0	16929
	Hill Kot	0	22	0	7	0	17441
	Satbani	0	2	6	0	0	14457
Swabi	Karnal Sher	0	7	48	0	0	16940
	Asota	0	0	0	0	0	14941
	Kalu Khan	0	8	0	0	0	24568
Swat	Tutano Bandai	0	0	2	0	0	18386
	Kanju	0	0	0	0	158	15737
	Koza Bandai	1	0	5	0	15	20141

		Not working but available for work	Not available for work (other than retired)	Alms and charity	Fisheries	Other	Total
Multan	Durana Langana	0	2	13	0	19	22112
	Binda Sandila	5	0	0	7	40	33539
	Saleh Mahay	1	0	4	0	4	9896
	Lutafabad	0	0	0	0	0	23487
	Panj Koha	2	4	16	0	19	23240

ANNEXURE - INCOME

Table - Secondary Source of Income continued

		Not working but available for work	Not available for work (other than retired)	Alms and charity	Fisheries	Other	Total
Karachi	Ibrahim Hai-dri	12	0	0	0	0	27881
	Landhi	1	0	0	0	1	19459
	Rehri	2	0	0	1	5	20673
Khairpur	Bapho	0	0	0	0	0	14170
	Kumb	1	0	0	0	0	20999
	Jishani	0	0	0	0	0	12132

		Not working but available for work	Not available for work (other than retired)	Alms and charity	Fisheries	Other	Total
Rawalakot	Pachiot	0	0	0	0	10	14982
	Pakhar	10	6	1	0	0	14512

		Not working but available for work	Not available for work (other than retired)	Alms and charity	Fisheries	Other	Total
Total		36	320	95	17	271	430580

ANNEXURE - MARITAL PROFILE

Table - Marital Status

		Never married	Married	Divorced	Separated	Deserted	Widow / widower	Other	Total
Mansehra	Kawai	8262 (59.1%)	5245 (37.5%)	10	0	1	468	3	13989
	Ganool	10215 (60.1%)	6313 (37.1%)	2	0	0	470	0	17000
	Hill Kot	10120 (58.0%)	6916 (39.7%)	8	0	3	392	0	17439
	Satbani	7970 (55.1%)	6073 (42.0%)	1	0	1	423	3	14471
Swabi	Karnal Sher	9776 (57.7%)	6729 (39.7%)	5	2	0	428	0	16940
	Asota	9134 (61.1%)	5494 (36.7%)	9	7	3	310	0	14957
	Kalu Khan	14850 (60.5%)	9085 (37.0%)	19	0	11	597	2	24564
Swat	Tutano Bandai	10827 (59.0%)	7116 (38.8%)	9	27	5	355	0	18339
	Kanju	9414 (59.9%)	5976 (38.0%)	9	12	0	312	0	15723
	Koza Bandai	11925 (59.2%)	7797 (38.7%)	12	20	0	386	1	20141

ANNEXURE - MARITAL PROFILE

Table - Marital Status continued

		Never married	Married	Divorced	Separated	Deserted	Widow / widower	Other	Total
Multan	Durana Langana	12644 (57.2%)	8676 (39.2%)	39	36	5	708	0	22108
	Binda Sandila	18624 (55.6%)	14097 (42.1%)	23	35	6	692	0	33477
	Saleh Mahay	5301 (53.6%)	4263 (43.1%)	10	3	2	317	0	9896
	Lutafabad	14151 (60.3%)	9210 (39.2%)	5	0	1	114	0	23481
	Panj Koha	13115 (56.5%)	9370 (40.4%)	58	36	9	600	7	23195

ANNEXURE - MARITAL PROFILE

Table - Marital Status continued

		Never married	Married	Divorced	Separated	Deserted	Widow / widower	Other	Total
Karachi	Ibrahim Haidri	16922 (60.8%)	9869 (35.4%)	88	32	13	919	10	27853
	Landhi	11808 (60.7%)	7046 (36.2%)	26	18	8	529	7	19442
	Rehri	11888 (57.6%)	8066 (39.1%)	61	29	16	578	7	20645
Khairpur	Bapho	8256 (58.4%)	5702 (40.3%)	2	0	2	181	1	14144
	Kumb	12598 (60.2%)	7998 (38.2%)	16	4	4	300	5	20925
	Jishani	7316 (60.4%)	4588 (37.9%)	16	6	7	188	0	12121

		Never married	Married	Divorced	Separated	Deserted	Widow / widower	Other	Total
Rawalakot	Pachiot	8430 (56.3%)	6184 (41.3%)	21	1	0	331	2	14969
	Pakhar	8313 (57.3%)	5697 (39.2%)	74	8	8	408	7	14515

		Never married	Married	Divorced	Separated	Deserted	Widow / widower	Other	Total
Total		251859 (58.5%)	167510 (38.9%)	523	276	105	10006 (2.3%)	55	430334

ANNEXURE - MARITAL PROFILE

Table - Intra-family Marriages

		Non-relative	First cousin	Other relative	Total
Mansehra	Kawai	6082 (51.5%)	5609 (47.5%)	126	11817
	Ganool	9994 (59.0%)	6930 (40.9%)	5	16929
	Hill Kot	10093 (57.9%)	7337 (42.1%)	3	17433
	Satbani	7371 (53.1%)	6448 (46.5%)	60	13879
Swabi	Karnal Sher	799	6003 (82.6%)	466	7268
	Asota	1837 (30.1%)	4171 (68.2%)	104	6112
	Kalu Khan	3353 (34.3%)	4674 (47.8%)	1748 (17.9%)	9775
Swat	Tutano Bandai	3947 (48.6%)	3458 (42.6%)	715	8120
	Kanju	3203 (50.9%)	1818 (28.9%)	1272 (20.2%)	6293
	Koza Bandai	3538 (42.8%)	3102 (37.5%)	1627 (19.7%)	8267

ANNEXURE - MARITAL PROFILE

Table - Intra-family Marriages continued

		Non-relative	First cousin	Other relative	Total
Multan	Durana Langana	349	9394 (96.1%)	37	9780
	Binda Sandila	736	14164 (92.8%)	361	15261
	Saleh Mahay	3395 (42.8%)	4443 (56.0%)	103	7941
	Lutafabad	13861 (59.7%)	9330 (40.2%)	11	23202
	Panj Koha	258	10021 (96.9%)	60	10339

		Non-relative	First cousin	Other relative	Total
Karachi	Ibrahim Haidri	3318 (24.9%)	9844 (73.8%)	180	13342
	Landhi	11550 (61.7%)	7116 (38.0%)	42	18708
	Rehri	2024 (18.7%)	8706 (80.4%)	97	10827
Khairpur	Bapho	1117 (15.7%)	5983 (84.2%)	2	7102
	Kumb	6092 (41.8%)	8381 (57.5%)	109	14582
	Jishani	1963 (27.7%)	4972 (70.1%)	159	7094

ANNEXURE - MARITAL PROFILE

Table - Intra-family Marriages continued

		Non-relative	First cousin	Other relative	Total
Rawalakot	Pachiot	2990 (45.7%)	3424 (52.4%)	122	6536
	Pakhar	2118 (34.3%)	2913 (47.2%)	1146 (18.6%)	6177

		Non-relative	First cousin	Other relative	Total
Total		99988 (38.9%)	148241 (57.7%)	8555	256784

ANNEXURE - MARITAL PROFILE

Table - Parents Related

		Non-relative	First cousin	Other relative	Total
Mansehra	Kawai	19	13959 (99.5%)	48	14026
	Ganool	413	16612 (97.5%)	8	17033
	Hill Kot	19	17403 (99.8%)	10	17432
	Satbani	3613 (25.0%)	10835 (74.9%)	23	14471
Swabi	Karnal Sher	1751	14054 (83.0%)	1135	16940
	Asota	4742 (31.7%)	9944 (66.6%)	250	14936
	Kalu Khan	7834 (31.9%)	9837 (40.0%)	6895 (28.1%)	24566
Swat	Tutano Bandai	9729 (53.0%)	6962 (37.9%)	1655 (9.0%)	18346
	Kanju	10028 (63.8%)	3221 (20.5%)	2474 (15.7%)	15723
	Koza Bandai	10003 (49.7%)	6164 (30.6%)	3974 (19.7%)	20141

ANNEXURE - MARITAL PROFILE

Table - Parents Related continued

		Non-relative	First cousin	Other relative	Total
Multan	Durana Langana	90	21956 (99.3%)	60	22106
	Binda Sandila	607	32349 (96.6%)	521	33477
	Saleh Mahay	303	9489 (95.9%)	104	9896
	Lutafabad	65	23398 (99.6%)	18	23481
	Panj Koha	132	22993 (98.9%)	114	23239

		Non-relative	First cousin	Other relative	Total
Karachi	Ibrahim Haidri	1734	25816 (92.6%)	329	27879
	Landhi	1215	18188 (93.5%)	51	19454
	Rehri	490	20045 (97.0%)	138	20673
Khairpur	Bapho	35	13776 (97.2%)	360	14171
	Kumb	163	20571 (98.0%)	259	20993
	Jishani	103	11679 (96.3%)	345	12127

ANNEXURE - MARITAL PROFILE

Table - Parents Related continued

		Non-relative	First cousin	Other relative	Total
Rawalakot	Pachiot	7631 (50.9%)	7158 (47.8%)	194	14983
	Pakhar	5064 (34.9%)	5591 (38.5%)	3861 (26.6%)	14516

		Non-relative	First cousin	Other relative	Total
Total		65783 (15.3%)	342000 (79.4%)	22826	430609

ANNEXURE - MARITAL PROFILE

Table - Paternal Grandparents Related

		Non-relative	First cousin	Other relative	Total
Mansehra	Kawai	8	14011 (99.9%)	9	14028
	Ganool	330	16710 (98.0%)	4	17044
	Hill Kot	3	17432 (99.9%)	7	17442
	Satbani	3598 (24.9%)	10875 (75.1%)	1	14474
Swabi	Karnal Sher	1419	14557 (86.0%)	954 (5.6%)	16930
	Asota	5431 (36.3%)	9397 (62.9%)	113	14941
	Kalu Khan	7030 (28.6%)	5829 (23.7%)	11709 (47.7%)	24568
Swat	Tutano Bandai	12519 (68.2%)	4600 (25.1%)	1227 (6.7%)	18346
	Kanju	13268 (84.4%)	1339	1116	15723
	Koza Bandai	13060 (64.8%)	3230 (16.0%)	3849 (19.1%)	20139

ANNEXURE - MARITAL PROFILE

Table - Paternal Grandparents Related continued

		Non-relative	First cousin	Other relative	Total
Multan	Durana Langana	61	21938 (99.2%)	66	22065
	Binda Sandila	189	33201 (99.2%)	87	33477
	Saleh Mahay	295	9521 (96.2%)	80	9896
	Lutafabad	63	23404 (99.7%)	14	23481
	Panj Koha	74	23036 (99.1%)	137	23247

		Non-relative	First cousin	Other relative	Total
Karachi	Ibrahim Haidri	861	26870 (96.3%)	162	27893
	Landhi	1188	18247 (93.8%)	20	19455
	Rehri	331	20249 (97.9%)	111	20691
Khairpur	Bapho	26	13788 (97.3%)	360	14174
	Kumb	158	20595 (98.1%)	250	21003
	Jishani	21	11820 (97.4%)	293	12134

ANNEXURE - MARITAL PROFILE

Table - Paternal Grandparents Related continued

		Non-relative	First cousin	Other relative	Total
Rawalakot	Pachiot	8186 (54.6%)	6612 (44.1%)	185	14983
	Pakhar	5228 (36.0%)	3797 (26.2%)	5489 (37.8%)	14514

		Non-relative	First cousin	Other relative	Total
Total		73347 (17.0%)	331058 (76.9%)	26243 (6.1%)	430648

ANNEXURE - MARITAL PROFILE

Table - Maternal Grandparents Related

		Non-relative	First cousin	Other relative	Total
Mansehra	Kawai	8	13971 (99.9%)	11	13990
	Ganool	316	16694 (98.0%)	19	17029
	Hill Kot	2	17412 (99.9%)	23	17437
	Satbani	3588 (24.8%)	10871 (75.1%)	14	14473
Swabi	Karnal Sher	1531	14441 (85.2%)	968	16940
	Asota	5529 (37.0%)	9328 (62.4%)	84	14941
	Kalu Khan	9067 (36.9%)	6150 (25.0%)	9351 (38.1%)	24568
Swat	Tutano Bandai	13322 (72.6%)	3897 (21.2%)	1127	18346
	Kanju	14233 (90.5%)	682	812	15727
	Koza Bandai	13877 (68.9%)	2439 (12.1%)	3825 (19.0%)	20141

ANNEXURE - MARITAL PROFILE

Table - Maternal Grandparents Related continued

		Non-relative	First cousin	Other relative	Total
Multan	Durana Langana	66	21961 (99.4%)	68	22095
	Binda Sandila	163	33227 (99.3%)	87	33477
	Saleh Mahay	280	9527 (96.3%)	89	9896
	Lutafabad	63	23402 (99.7%)	15	23480
	Panj Koha	79	23011 (99.1%)	137	23227

		Non-relative	First cousin	Other relative	Total
Karachi	Ibrahim Haidri	650	27059 (97.2%)	118	27827
	Landhi	1188	18232 (93.8%)	26	19446
	Rehri	347	20221 (97.7%)	122	20690
Khairpur	Bapho	28	13771 (97.3%)	361	14160
	Kumb	162	20567 (98.0%)	265	20994
	Jishani	22	11801 (97.4%)	293	12116

ANNEXURE - MARITAL PROFILE

Table - Maternal Grandparents Related continued

		Non-relative	First cousin	Other relative	Total
Rawalakot	Pachiot	8357 (55.8%)	6449 (43.0%)	177	14983
	Pakhar	5360 (36.9%)	2907 (20.0%)	6248 (43.0%)	14515

		Non-relative	First cousin	Other relative	Total
Total		78238 (18.2%)	328020 (76.2%)	24240 (5.6%)	430498

ANNEXURE - HOUSEHOLD DISABILITY

Table - Difficulty in Seeing even with Glasses

		Yes (unable to see)	A lot (a lot of difficulty)	Total disability (vision)	No (no difficulty)	Total
Mansehra	Kawai	16	314	330	13698	14028
	Ganool	363	244	607	16430	17037
	Hill Kot	40	559	599	16844	17443
	Satbani	24	296	320	14148	14471
Swabi	Karnal Sher	182	516	698	16242	16940
	Asota	34	365	399	14542	14941
	Kalu Khan	40	1624	1664	22904	24568
Swat	Tutano Bandai	17	1096	1113	17272	18385
	Kanju	81	463	544	15193	15737
	Koza Bandai	111	1102	1213	18925	20138

		Yes (unable to see)	A lot (a lot of difficulty)	Total disability (vision)	No (no difficulty)	Total
Multan	Durana Langana	785	493	1278	20834	22112
	Binda Sandila	765	520	1285	32191	33476
	Saleh Mahay	102	933	1035	8861	9896
	Lutafabad	9	965	974	22503	23477
	Panj Koha	235	799	1034	22208	23242

ANNEXURE - HOUSEHOLD DISABILITY

Table - Difficulty in Seeing even with Glasses continued

		Yes (unable to see)	A lot (a lot of difficulty)	Total disability (vision)	No (no difficulty)	Total
Karachi	Ibrahim Haidri	88	761	849	27047	27896
	Landhi	237	430	667	18794	19461
	Rehri	217	1676	1893	18802	20695
Khairpur	Bapho	10	595	605	13569	14174
	Kumb	26	572	598	20405	21003
	Jishani	28	614	642	11503	12145

		Yes (unable to see)	A lot (a lot of difficulty)	Total disability (vision)	No (no difficulty)	Total
Rawalakot	Pachiot	248	595	843	14140	14983
	Pakhar	58	665	723	13792	14516

		Yes (unable to see)	A lot (a lot of difficulty)	Total disability (vision)	No (no difficulty)	Total
Total		3716 (0.9%)	16197 (3.8%)	19913 (4.6%)	410847 (95.3%)	430764

ANNEXURE - HOUSEHOLD DISABILITY

Table - Difficulty in Hearing

		Yes (unable to hear)	A lot (a lot of difficulty)	Total disability (hearing)	No (no difficulty)	Total
Mansehra	Kawai	4	214	218	13810	14028
	Ganool	95	219	314	16727	17041
	Hill Kot	49	190	239	17202	17441
	Satbani	9	106	115	14356	14471
Swabi	Karnal Sher	28	211	239	16701	16940
	Asota	19	156	175	14766	14941
	Kalu Khan	62	398	460	24108	24568
Swat	Tutano Bandai	17	557	574	17811	18385
	Kanju	82	262	344	15393	15737
	Koza Bandai	65	430	495	19643	20138

		Yes (unable to hear)	A lot (a lot of difficulty)	Total disability (hearing)	No (no difficulty)	Total
Multan	Durana Langana	251	181	432	21680	22112
	Binda Sandila	188	278	466	33010	33476
	Saleh Mahay	37	350	387	9509	9896
	Lutafabad	7	173	180	23298	23478
	Panj Koha	130	250	380	22862	23242

ANNEXURE - HOUSEHOLD DISABILITY

Table - Difficulty in Hearing continued

		Yes (unable to hear)	A lot (a lot of difficulty)	Total disability (hearing)	No (no difficulty)	Total
Karachi	Ibrahim Haidri	26	383	409	27487	27896
	Landhi	106	332	438	19023	19461
	Rehri	82	658	740	19956	20696
Khairpur	Bapho	0	423	423	13751	14174
	Kumb	19	406	425	20576	21001
	Jishani	6	352	358	11787	12145

		Yes (unable to hear)	A lot (a lot of difficulty)	Total disability (hearing)	No (no difficulty)	Total
Rawalakot	Pachiot	79	339	418	14565	14983
	Pakhar	63	358	421	14095	14516

		Yes (unable to hear)	A lot (a lot of difficulty)	Total disability (hearing)	No (no difficulty)	Total
Total		1424 (0.3%)	7226 (1.7%)	8650 (2.0%)	422116 (98.0%)	430766

ANNEXURE - HOUSEHOLD DISABILITY

Table - Difficulty in Walking or Climbing Stairs

		Yes (unable to walk or climb stairs)	A lot (a lot of difficulty)	Total disability (walking)	No (no difficulty)	Total
Mansehra	Kawai	7	493	500	13528	14028
	Ganool	122	270	392	16650	17042
	Hill Kot	66	266	332	17106	17438
	Satbani	6	453	459	14011	14470
Swabi	Karnal Sher	27	474	501	16439	16940
	Asota	46	484	530	14411	14941
	Kalu Khan	83	477	560	24008	24568
Swat	Tutano Bandai	45	470	515	17870	18385
	Kanju	57	388	445	15292	15737
	Koza Bandai	96	440	536	19602	20138

		Yes (unable to walk or climb stairs)	A lot (a lot of difficulty)	Total disability (walking)	No (no difficulty)	Total
Multan	Durana Langana	630	247	877	21235	22112
	Binda Sandila	248	449	697	32779	33476
	Saleh Mahay	130	842	972	8924	9896
	Lutafabad	8	523	531	22947	23478
	Panj Koha	148	419	567	22674	23241

ANNEXURE - HOUSEHOLD DISABILITY

Table - Difficulty in Walking or Climbing Stairs continued

		Yes (unable to walk or climb stairs)	A lot (a lot of difficulty)	Total disability (walking)	No (no difficulty)	Total
Karachi	Ibrahim Haidri	20	485	505	27391	27896
	Landhi	55	447	502	18959	19461
	Rehri	45	628	673	20017	20690
Khairpur	Bapho	2	473	475	13699	14174
	Kumb	16	495	511	20487	20998
	Jishani	0	474	474	11671	12145

		Yes (unable to walk or climb stairs)	A lot (a lot of difficulty)	Total disability (walking)	No (no difficulty)	Total
Rawalakot	Pachiot	79	268	347	14636	14983
	Pakhar	63	238	301	14215	14516

		Yes (unable to walk or climb stairs)	A lot (a lot of difficulty)	Total disability (walking)	No (no difficulty)	Total
Total		1999 (0.5%)	10203 (2.4%)	12202 (2.8%)	418551 (97.2%)	430753

ANNEXURE - HOUSEHOLD DISABILITY

Table - Difficulty in Learning New Tasks

		Yes (unable to learn new tasks)	A lot (a lot of difficulty)	Total disability (learning new tasks)	No (no difficulty)	Total
Mansehra	Kawai	5	310	315	13713	14028
	Ganool	31	71	102	16939	17041
	Hill Kot	30	166	196	17244	17440
	Satbani	3	88	91	14380	14471
Swabi	Karnal Sher	6	202	208	16732	16940
	Asota	9	132	141	14800	14941
	Kalu Khan	46	72	118	24450	24568
Swat	Tutano Bandai	20	266	286	18099	18385
	Kanju	20	195	215	15522	15737
	Koza Bandai	58	144	202	19935	20137

		Yes (unable to learn new tasks)	A lot (a lot of difficulty)	Total disability (learning new tasks)	No (no difficulty)	Total
Multan	Durana Langana	95	23	118	21994	22112
	Binda Sandila	12	118	130	33346	33476
	Saleh Mahay	19	188	207	9689	9896
	Lutafabad	0	51	51	23426	23477
	Panj Koha	37	147	184	23037	23221

ANNEXURE - HOUSEHOLD DISABILITY

Table - Difficulty in Learning New Tasks continued

		Yes (unable to learn new tasks)	A lot (a lot of difficulty)	Total disability (learning new tasks)	No (no difficulty)	Total
Karachi	Ibrahim Haidri	9	194	203	27689	27892
	Landhi	10	114	124	19337	19461
	Rehri	6	150	156	20520	20676
Khairpur	Bapho	3	141	144	14030	14174
	Kumb	4	243	247	20752	20999
	Jishani	0	192	192	11953	12145

		Yes (unable to learn new tasks)	A lot (a lot of difficulty)	Total disability (learning new tasks)	No (no difficulty)	Total
Rawalakot	Pachiot	44	217	261	14722	14983
	Pakhar	48	206	254	14252	14506

		Yes (unable to learn new tasks)	A lot (a lot of difficulty)	Total disability (learning new tasks)	No (no difficulty)	Total
Total		515 (0.1%)	3630 (0.8)	4145 (1.0%)	426561 (99.0%)	430706

ANNEXURE - HOUSEHOLD DISABILITY

Table - Difficulty with Self Care (washing all over/dressing)

		Yes (unable to take self care)	A lot (a lot of difficulty)	Total disability (self care)	No (no difficulty)	Total
Mansehra	Kawai	5	161	166	13862	14028
	Ganool	9	45	54	16986	17040
	Hill Kot	20	45	65	17378	17443
	Satbani	1	54	55	14415	14470
Swabi	Karnal Sher	4	189	193	16747	16940
	Asota	22	111	133	14808	14941
	Kalu Khan	60	74	134	24435	24569
Swat	Tutano Bandai	27	154	181	18204	18385
	Kanju	31	84	115	15622	15737
	Koza Bandai	70	218	288	19849	20137

		Yes (unable to take self care)	A lot (a lot of difficulty)	Total disability (self care)	No (no difficulty)	Total
Multan	Durana Langana	76	26	102	22010	22112
	Binda Sandila	16	79	95	33381	33476
	Saleh Mahay	46	111	157	9739	9896
	Lutafabad	0	50	50	23427	23477
	Panj Koha	54	126	180	23059	23239

ANNEXURE - HOUSEHOLD DISABILITY

Table - Difficulty with Self Care (washing all over/dressing) continued

		Yes (unable to take self care)	A lot (a lot of difficulty)	Total disability (self care)	No (no difficulty)	Total
Karachi	Ibrahim Haidri	12	212	224	27671	27895
	Landhi	14	147	161	19230	19391
	Rehri	11	166	177	20514	20691
Khairpur	Bapho	0	107	107	14067	14174
	Kumb	3	75	78	20922	21000
	Jishani	0	73	73	12071	12144

		Yes (unable to take self care)	A lot (a lot of difficulty)	Total disability (self care)	No (no difficulty)	Total
Rawalakot	Pachiot	25	122	147	14836	14983
	Pakhar	28	154	182	14334	14516

		Yes (unable to take self care)	A lot (a lot of difficulty)	Total disability (self care)	No (no difficulty)	Total
Total		534 (0.1%)	2583 (0.6%)	3117 (0.7%)	427567 (99.3%)	430684

ANNEXURE - HOUSEHOLD DISABILITY

Table - Difficulty in Communication (in understanding or being understood by others)

		Yes (unable to communicate)	A lot (a lot of difficulty)	Total disability (communication)	No (no difficulty)	Total
Mansehra	Kawai	6	143	149	13877	14026
	Ganool	11	86	97	16941	17038
	Hill Kot	39	115	154	17286	17440
	Satbani	2	107	109	14361	14470
Swabi	Karnal Sher	18	153	171	16769	16940
	Asota	14	91	105	14836	14941
	Kalu Khan	56	63	119	24449	24568
Swat	Tutano Bandai	23	164	187	18194	18381
	Kanju	22	113	135	15602	15737
	Koza Bandai	54	375	429	19708	20137

		Yes (unable to communicate)	A lot (a lot of difficulty)	Total disability (communication)	No (no difficulty)	Total
Multan	Durana Langana	58	24	82	22030	22112
	Binda Sandila	20	115	135	33341	33476
	Saleh Mahay	18	178	196	9700	9896
	Lutafabad	0	28	28	23450	23478
	Panj Koha	45	123	168	23071	23239

ANNEXURE - HOUSEHOLD DISABILITY

Table - Difficulty in Communication (in understanding or being understood by others) continued

		Yes (unable to communicate)	A lot (a lot of difficulty)	Total disability (communication)	No (no difficulty)	Total
Karachi	Ibrahim Haidri	12	213	225	27671	27896
	Landhi	20	229	249	19212	19461
	Rehri	11	242	253	20455	20708
Khairpur	Bapho	0	147	147	14027	14174
	Kumb	29	128	157	20843	21000
	Jishani	0	126	126	12019	12145

		Yes (unable to communicate)	A lot (a lot of difficulty)	Total disability (communication)	No (no difficulty)	Total
Rawalakot	Pachiot	24	99	123	14860	14983
	Pakhar	52	186	238	14278	14516

		Yes (unable to communicate)	A lot (a lot of difficulty)	Total disability (communication)	No (no difficulty)	Total
Total		534 (0.1%)	3248 (0.8%)	3782 (0.9%)	426980 (99.1%)	430762

ANNEXURE - HOUSEHOLD DISABILITY

Table - All Disabilities

Disability		Severe Disability (unable)	Mild to Moderate Disability (a lot of difficulty)	Total Disability
Seeing (vision)		3716 (0.9%)	16197 (3.8%)	19913 (4.6%)
Hearing		1424 (0.3%)	7226 (1.7%)	8650 (2.0%)
Walking and Climbing (Physical)		1999 (0.5%)	10203 (2.4%)	12202 (2.8%)
Learning		515 (0.1%)	3630 (0.8%)	4145 (1.0%)
Self Care		534 (0.1%)	2583 (0.6%)	3117 (0.7%)
Communicating		534 (0.1%)	3248 (0.8%)	3782 (0.9%)
Total Number		8722	43087	51809
Total Percentage		2.0%	10.1%	12.1%

ANNEXURE - HOUSEHOLD DISABILITY

Table - All Disabilities by Union Council

District	Union Council	Vision				Hearing				Physical		
		Severe	MtoM	Total		Severe	MtoM	Total		Severe	MtoM	Total
Mansehra	Kawai	16	314	330		4	214	218		7	493	500
	Ganool	363	244	607		95	219	314		122	270	392
	Hill Kot	40	559	599		49	190	239		66	266	332
	Satbani	24	296	320		9	106	115		6	453	459
Swabi	Karnal Sher	182	516	698		28	211	239		27	474	501
	Asota	34	365	399		19	156	175		46	484	530
	Kalu Khan	40	1624	1664		62	398	460		83	477	560
Swat	Tutano Bandai	17	1096	1113		17	557	574		45	470	515
	Kanju	81	463	544		82	262	344		57	388	445
	Koza Bandai	111	1102	1213		65	430	495		96	440	536
Multan												
	Durana Langana	785	493	1278		251	181	432		630	247	877
	Binda Sandila	765	520	1285		188	278	466		248	449	697
	Saleh Mahay	102	933	1035		37	350	387		130	842	972
	Lutafabad	9	965	974		7	173	180		8	523	531
	Panj Koha	235	799	1034		130	250	380		148	419	567
Karachi												
	Ibrahim	88	761	849		26	383	409		20	485	505
	Landhi	237	430	667		106	332	438		55	447	502
	Rehri	217	1676	1893		82	658	740		45	628	673
Khairpur	Bapho	10	595	605		0	423	423		2	473	475
	Kumb	26	572	598		19	406	425		16	495	511
	Jishani	28	614	642		6	352	358		0	474	474
Rawalakot	Pachiot	248	595	843		79	339	418		79	268	347
	Pakhar	58	665	723		63	358	421		63	238	301
Total		16716	161970	19913		1424	7226	8650		1999	10203	12202

ANNEXURE - HOUSEHOLD DISABILITY

Table - All Disabilities by Union Council continued

Learning			Self Care			Communicating			All disabilities		
Severe	MtoM	Total	Severe	MtoM	Total	Severe	MtoM	Total	Severe	MtoM	Total
5	310	315	5	161	166	6	143	149	43	1635	1678
31	71	102	9	45	54	11	86	97	631	935	1566
30	166	196	20	45	65	39	115	154	244	1341	1585
3	88	91	1	54	55	2	107	109	45	1104	1149
6	202	208	4	189	193	18	153	171	265	1745	2010
9	132	141	22	111	133	14	91	105	144	1339	1483
46	72	118	60	74	134	56	63	119	347	2708	3055
20	266	286	27	154	181	23	164	187	149	2707	2856
20	195	215	31	84	115	22	113	135	293	1505	1798
58	144	202	70	218	288	54	375	429	454	2709	3163
95	23	118	76	26	102	58	24	82	1895	994	2889
12	118	130	16	79	95	20	115	135	1249	1559	2808
19	188	207	46	111	157	18	178	196	352	2602	2954
0	51	51	0	50	50	0	28	28	24	1790	1814
37	147	184	54	126	180	45	123	168	649	1864	2513
9	194	203	12	212	224	12	213	225	167	2248	2415
10	114	124	14	147	161	20	229	249	442	1699	2141
6	150	156	11	166	177	11	242	253	372	3520	3892
3	141	144	0	107	107	0	147	147	15	1886	1901
4	243	247	3	75	78	29	128	157	97	1919	2016
0	192	192	0	73	73	0	126	126	34	1831	1865
44	217	261	25	122	147	24	99	123	499	1640	2139
48	206	254	28	154	182	52	186	238	312	1807	2119
515	3630	4145	534	2583	3117	534	3248	3782	8722	43087	51809

MtoM - Mild to Moderate

ANNEXURE - HOUSEHOLD DISABILITY

Table - Prevalence of All Disabilities by Union Council

District	Union Council	Total Population Surveyed	Prevalence of Severe Disabilities	Prevalence of Mild to Moderate Disabilities	Prevalence of All Disabilities
Mansehra	Kawai	14028	0.3%	11.7%	12.0%
	Ganool	17037	3.7%	5.5%	9.2%
	Hill Kot	17443	1.4%	7.7%	9.1%
	Satbani	14471	0.3%	7.6%	7.9%
Swabi	Karnal Sher	16940	1.6%	10.3%	11.9%
	Asota	14941	1.0%	9.0%	9.9%
	Kalu Khan	24568	1.4%	11.0%	12.4%
Swat	Tutano Bandai	18385	0.8%	14.7%	15.5%
	Kanju	15737	1.9%	9.6%	11.4%
	Koza Bandai	20138	2.3%	13.5%	15.7%
Multan	Durana Langana	22112	8.6%	4.5%	13.1%
	Binda Sandila	33476	3.7%	4.7%	8.4%
	Saleh Mahay	9896	3.6%	26.3%	29.9%
	Lutafabad	23477	0.1%	7.6%	7.7%
	Panj Koha	23242	2.8%	8.0%	10.8%
Karachi	Ibrahim Haidri	27896	0.6%	8.1%	8.7%
	Landhi	19461	2.3%	8.7%	11.0%
	Rehri	20695	1.8%	17.0%	18.8%
Khairpur	Bapho	14174	0.1%	13.3%	13.4%
	Kumb	21003	0.5%	9.1%	9.6%
	Jishani	12145	0.3%	15.1%	15.4%
Rawalakot	Pachiot	14983	3.3%	10.9%	14.3%
	Pakhar	14516	2.1%	12.4%	14.6%
Total		430764	2.0%	10.0%	12.0%

ANNEXURE - HOUSEHOLD DISABILITY

Table - All Disabilities by Union Council continued

		At birth	Not related to disaster	Related to disaster	Accident / injury not due to disaster	Accident / injury due to disaster	Age	Conflicts	Others	Unable to say	Total
Manshara	Kawai	279 (30.6%)	453 (49.7%)	58	13	33	47	0	0	29	912
	Ganool	262	537	48	64	78	197	4	2	11	1203
	Hill Kot	49	741 (69.6%)	30	81	51	4	0	3	105	1064
	Satbani	530 (59%)	168	3	5	87	104	0	0	0	897
Swabi	Karnal Sher	348 (25.8%)	650 (48.2%)	6	133 (9.9%)	5	79	1	5	121	1348
	Asota	205 (21.1%)	692 (71.1%)	2	56	3	4	2	0	9	973
	Kalu Khan	645 (29.3%)	1030 (46.8%)	3	89	2	52	0	0	382	2203
	Tutano Bandai	389 (20.2%)	1302 (67.7%)	8	122	4	63	15	4	17	1924
Swat	Kanju	368 (29.2%)	466 (37.0%)	10	122	1	227 (18.0%)	35	4	28	1261
	Koza Bandai	337 (16.1%)	948 (45.2%)	14	152	24	243 (11.6%)	41	45	295	2099

ANNEXURE - HOUSEHOLD DISABILITY

Table - Main Cause of Onset of Difficulties continued

		At birth	Not related to disaster	Related to disaster	Accident/ injury not due to disaster	Accident / injury due to disaster	Age	Conflicts	Others	Unable to say	Total
Multan	Durana Langana	218 (11.3%)	1272 (66.1%)	1	172	4	257	1	0	0	1925
	Binda Sandila	372 (17.8%)	1063 (51%)	4	125	3	501 (24.0%)	0	13	5	2086
	Saleh Mahay	102	764 (38.8%)	1	24	69	210	0	53	747 (37.9%)	1970
	Lutafabad	47	1355 (93.4%)	1	0	0	0	0	0	47	1450
	Panj Koha	181 (11.5%)	934 (59.2%)	11	137	12	289 (18.3%)	3	1	11	1579

ANNEXURE - HOUSEHOLD DISABILITY

Table - Main Cause of Onset of Difficulties continued

		At birth	Not related to disaster	Related to disaster	Accident/ injury not due to disaster	Accident / injury due to disaster	Age	Conflicts	Others	Unable to say	Total
Karachi	Ibrahim Haidri	340 (21.8%)	936 (60.1%)	8	116	3	27	3	112	13	1558
	Landhi	38	784 (55.7%)	2	79	2	71	1	51	379 (26.9%)	1407
	Rehri	195	2098 (75.8%)	18	122	27	24	0	79	206 (7.4%)	2769
Khairpur	Bapho	257 (16.4%)	1240 (79.0%)	7	8	5	1	0	2	49	1569
	Kumb	318 (19.0%)	1249 (74.8%)	3	72	8	12	0	0	8	1670
	Jishani	210 (14.8%)	1088 (77.4%)	46	31	8	4	0	22	6	1415

ANNEXURE - HOUSEHOLD DISABILITY

Table - Main Cause of Onset of Difficulties continued

		At birth	Not related to disaster	Related to disaster	Accident/ injury not due to disaster	Accident / injury due to disaster	Age	Conflicts	Others	Unable to say	Total
Rawalakot	Pachiot	272 (20.0%)	680 (50.0%)	13	90	16	274 (20.1%)	4	2	10	1361
	Pakhar	330 (26.3%)	460 (36.7%)	25	128 (10.2%)	14	235 (18.7%)	1	7	55	1255

Total		At birth	Not related to disaster	Related to disaster	Accident/ injury not due to disaster	Accident / injury due to disaster	Age	Conflicts	Others	Unable to say	Total
		6292 (17.5%)	20910 (58.2%)	322	1941	459	2925	111	405	2533	35898

ANNEXURE - HOUSEHOLD INFRASTRUCTURE

Table - Dwelling Ownership

		Owned	Rented / tenant	Rent free	No dwelling unit	Don't know / can't say	Other	Total
Mansehra	Kawai	2693	1	4	0	0	0	2698
	Ganool	3057	0	4	0	0	0	3061
	Hill Kot	3099	3	3	0	0	0	3105
	Satbani	3041	0	0	0	0	0	3041
Swabi	Karnal Sher	2507	275	19	0	0	0	2801
	Asota	1798	33	366	2	1	0	2200
	Kalu Khan	3984 (99.0%)	18	21	1	0	0	4024
Swat	Tutano Bandai	1961	124	121	1	2	0	2209
	Kanju	1426	451	41	2	0	0	1920
	Koza Bandai	1977	466	100	4	1	0	2548

		Owned	Rented / tenant	Rent free	No dwelling unit	Don't know / can't say	Other	Total
Multan	Durana Langana	3779	34	103	0	0	0	3916
	Binda Sandila	No data						
	Saleh Mahay	No data						
	Lutafabad	4393 (98.7%)	15	29	10	2	0	4449
	Panj Koha	3615 (931%)	36	232	0	0	0	3883

ANNEXURE - HOUSEHOLD INFRASTRUCTURE

Table - Dwelling Ownership continued

		Owned	Rented / tenant	Rent free	No dwelling unit	Don't know / can't say	Other	Total
Karachi	Ibrahim Haidri	4244 (99.3%)	21	7	0	0	0	4272
	Landhi	3106 (97.8%)	59	11	0	0	0	3176
	Rehri	3511 (98.8%)	32	9	0	0	0	3552
Khairpur	Bapho	2036 (98.7%)	2	23	0	1	0	2062
	Kumb	3160 (98.4%)	18	33	0	0	0	3211
	Jishani	1997 (98.3%)	5	27	2	0	0	2031

		Owned	Rented / tenant	Rent free	No dwelling unit	Don't know / can't say	Other	Total
Rawalakot	Pachiot	3040 (99.6%)	8	2	1	0	0	3051
	Pakhar	2601 (98.8%)	10	17	4	0	0	2632

		Owned	Rented / tenant	Rent free	No dwelling unit	Don't know / can't say	Other	Total
Total		61025 (95.5%)	1611 (2.5%)	1172	27	7	0	63842

ANNEXURE - RELIGION

Table - Religion

		Islam	Christianity	Sikhism	Hinduism	Other	Total
Mansehra	Kawai	2700 (100%)	0	1	0	0	2701
	Ganool	3039 (100%)	0	0	0	0	3039
	Hill Kot	3108 (100%)	0	0	0	0	3108
	Satbani	3110 (100%)	0	0	0	0	3110
Swabi	Karnal Sher	2799 (100%)	0	1	0	0	2800
	Asota	2190 (99.6%)	1	3	0	0	2194
	Kalu Khan	4020 (100%)	0	0	0	0	4020
Swat	Tutano Bandai	2227	1	0	0	0	2228
	Kanju	1916	0	0	0	0	1916
	Koza Bandai	2559	0	0	0	0	2559

		Islam	Christianity	Sikhism	Hinduism	Other	Total
Multan	Durana Langana	3921	0	0	0	0	3921
	Binda Sandila	No data					
	Saleh Mahay	No data					
	Lutafabad	4441 (100%)	0	0	0	0	4441
	Panj Koha	3884 (100%)	0	0	0	0	3884

ANNEXURE - RELIGION

Table - Religion continued

		Islam	Christianity	Sikhism	Hinduism	Other	Total
Karachi	Ibrahim Haidri	4266 (99.8%)	4	0	4	0	4274
	Landhi	2963 (94.9%)	0	0	159	0	3122
	Rehri	3541 (99.6%)	2	0	12	0	3555
Khairpur	Bapho	1991 (97.2%)	1	0	55	0	2047
	Kumb	3152 (98%)	0	1	61	0	3214
	Jishani	1999 (98.5%)	0	0	30	0	2029

		Islam	Christianity	Sikhism	Hinduism	Other	Total
Rawalakot	Pachiot	3051 (100%)	0	0	0	0	3051
	Pakhar	2632 (100%)	0	0	0	0	2632

		Islam	Christianity	Sikhism	Hinduism	Other	Total
Total		63509 (94.6%)	9	6	321 (4.8%)	0	67115

ANNEXURE - WATER

Table - Main Source of Drinking Water

		Piped in residence	Public tap	Hand pump in residence	Public hand pump	Covered well in residence	Covered public well	Open well in residence	Open public well	Surface water	Public tank	Other	Total
Manshira	Kawai	2693 (97.3%)	3	0	0	0	0	0	70	1	0	0	2767
	Ganool	2434 (43.4%)	4	3	0	488	7	489	2165 (38.6%)	16	1	0	5607
	Hill Kot	1903 (60.7%)	0	2	0	0	0	1	2	1227 (39.1%)	0	0	3135
	Satbani	3026 (86.1%)	2	0	0	0	0	14	0	474 (13.4%)	0	0	3516
	Karnal Sher	18	14	2626 (93.4%)	16	130	7	1	0	0	0	0	2812
Swabi	Asota	5	48	1620 (73.5%)	80	298	45	65	27	7	8	0	2203
	Kalu Khan	0	0	3831 (96.1%)	4	133	9	7	1	0	0	0	3985
	Tutano Bandai	1095 (80.8%)	99	0	2	19	8	40	53	38	1	0	1355
Swat	Kanju	457 (26.6%)	40	57	81	811 (47%)	127	123	3	21	0	0	1720
	Koza Bandai	999 (48.3%)	45	15	28	316 (15.3%)	26	389 (18.8%)	41	197	13	0	2069

ANNEXURE - WATER

Table - Main Source of Drinking Water continued

		Piped in residence	Public tap	Hand pump in residence	Public hand pump	Covered well in residence	Covered public well	Open well in residence	Open public well	Surface water	Public tank	Other	Total
Multan	Durana Langana	2	31	3475 (91.1%)	304	3	1	0	0	0	0	0	3816
	Binda Sandila	No data											
	Saleh Mahay	No data											
	Lutafabad	1	66	3674 (82.6%)	698 (15.7%)	3	3	1	0	1	0	0	4447
	Panj Koha	7	39	3207 (87.0%)	427 (11.6%)	3	3	0	0	1	0	0	3687

ANNEXURE - WATER

Table - Main Source of Drinking Water continued

		Piped in residence	Public tap	Hand pump in residence	Public hand pump	Covered well in residence	Covered public well	Open well in residence	Open public well	Surface water	Public tank	Other	Total
Karachi	Ibrahim Haidri	3643 (94.7%)	190	1	0	4	1	3	0	0	6	0	3848
	Landhi	2394 (77.5%)	679 (22.0%)	5	0	2	0	2	7	0	0	0	3089
	Rehri	2832 (89.3%)	216	21	4	34	6	16	11	15	16	0	3171
	Bapho	205 (10.1%)	26	1209 (59.3%)	563 (27.6%)	28	0	3	2	3	0	0	2039
Khairpur	Kumb	473 (14.8%)	8	1523 (47.6%)	1156 (36.1%)	35	2	2	0	0	0	0	3199
	Jishani	182	11	1359 (67.4%)	372 (18.4%)	77	2	13	0	0	1	0	2017

ANNEXURE - WATER

Table - Main Source of Drinking Water continued

		Piped in residence	Public tap	Hand pump in residence	Public hand pump	Covered well in residence	Covered public well	Open well in residence	Open public well	Surface water	Public tank	Other	Total
Rawalakot	Pachiot	587 (20.2%)	3	5	3	18	47	291 (10%)	1945 (67%)	1	0	0	2900
	Pakhar	1162 (59.4%)	533 (27.3%)	17	38	37	29	52	66	2	19	0	1955

		Piped in residence	Public tap	Hand pump in residence	Public hand pump	Covered well in residence	Covered public well	Open well in residence	Open public well	Surface water	Public tank	Other	Total
Total		24118 (38.1%)	2057	22650 (35.8%)	3776	2439	323	1512	4393	2004	65	0	63337

ANNEXURE - SANITATION

Table - Type of Toilet Available

		Own flush	Shared flush	Public flush	Own pit latrine	Shared pit latrine	Public pit latrine	Open defecation	Other	Total
Mansehra	Kawai	538 (19.8%)	3	1	1776 (65.4%)	22	0	372 (13.7%)	0	2712
	Ganool	273	6	2	1884 (61.8%)	16	48	818 (26.8%)	0	3047
	Hill Kot	134	0	0	727 (23.3%)	6	2	2246 (72%)	0	3115
	Satbani	390 (12.7%)	16	28	618 (20%)	21	0	1990 (64.9%)	0	3063
Swabi	Karnal Sher	2548 (100%)	7	7	105	6	8	117	0	2798
	Asota	1130 (30.2%)	41	3	33	1	0	995 (68.6%)	0	2203
	Kalu Khan	1434 (49.3%)	1461 (28.9%)	2	404 (20%)	592	0	658	0	4551
Swat	Tutano Bandai	142	89	5	186 (17.7%)	387 (36.6%)	69	1373 (36.4%)	0	2251
	Kanju	813 (42.4%)	129	5	89	46	98	733 (38.3%)	0	1913
	Koza Bandai	169	56	4	534 (16.4%)	662 (49.3%)	11	1121 (33.5%)	0	2557

ANNEXURE - SANITATION

Table - Type of Toilet Available continued

		Own flush	Shared flush	Public flush	Own pit latrine	Shared pit latrine	Public pit latrine	Open defecation	Other	Total
Multan	Durana Langana	480 (12.3%)	6	37	1734 (44.5%)	107	20	1512 (38.8%)	0	3896
	Binda Sandila	No data								
	Saleh Mahay	No data								
	Lutafabad	119	16	41	2233 (50%)	32	32	1978 (44.4%)	0	4451
	Panj Koha	235	1	53	1043 (27%)	143	39	2335 (60.6%)	0	3849

		Own flush	Shared flush	Public flush	Own pit latrine	Shared pit latrine	Public pit latrine	Open defecation	Other	Total
Karachi	Ibrahim Haidri	9	2	109	1842 (43%)	1934 (45.3%)	370	1	0	4267
	Landhi	872 (27.2%)	1	16	2192 (68.5%)	16	1	98	0	3196
	Rehri	477 (13.4%)	17	250	2525 (71.2%)	99	81	93	0	3542
Khairpur	Bapho	163	49	120	273 (13.2%)	39	21	1396 (67.7%)	0	2061
	Kumb	772 (24%)	44	27	472 (14.7%)	17	16	1853 (57.8%)	0	3201
	Jishani	261 (12.7%)	15	67	475 (23.2%)	63	55	1106 (54%)	0	2042

ANNEXURE - SANITATION

Table - Type of Toilet Available continued

		Own flush	Shared flush	Public flush	Own pit latrine	Shared pit latrine	Public pit latrine	Open defecation	Other	Total
Rawalakot	Pachiot	242	1	0	2153 (70.5%)	365 (11.9%)	1	291	0	3053
	Pakhar	0	0	0	2096 (90%)	226	0	310 (11.7%)	0	2632

		Own flush	Shared flush	Public flush	Own pit latrine	Shared pit latrine	Public pit latrine	Open defecation	Other	Total
Total		11201 (17.4%)	1960	777	23394 (36.3)	4800 (7.5%)	872	21396 (33.2%)	0	64400

ANNEXURE - HEALTH FACILITIES

Table - Type of Health Facility Available in Village

		None	Govt Hosp	Govt Disp	BHU	RHC	Pvt Hosp	MBBS MBBS prvt clinic	Non MBBS prvt clinic	Unani med	Hakeem	Homeo- path	Pvt disp	Pir	Other	Total
Mansehra	Kawai	1201 (61.1%)	0	0	No data	1	0	0	29	0	0	1	735 (37.4%)	0	0	1967
	Ganool	2615 (99.8%)	0	3	No data	0	0	1	0	0	0	0	0	0	0	2619
	Hill Kot	3106 (100%)	0	0	0	0	0	0	0	0	0	0	0	0	0	3106
	Satbani	2969 (98.0%)	15	1	44	1	0	0	0	0	0	0	0	0	0	3030
	Karnal Sher	0	78	4234 (13.3%)	No data	16	5478 (17.1%)	5536 (17.3%)	2778 (8.7%)	2774 (8.7%)	2771 (8.7%)	2766 (8.7%)	2768 (8.7%)	2744 (8.6%)	0	31943
Swabi	Asota	2160 (99.8%)	3	1	0	0	0	0	0	0	0	0	0	0	0	2164
	Kalu Khan	0	0	0	0	No data	1	4020 (14.3%)	4019 (14.3%)	4020 (14.3%)	4021 (14.3%)	4020 (14.3%)	4021 (14.3%)	4020 (14.3)	0	28142
	Tutano Bandai	1062 (47.8%)	1	1155 (52.0%)	1	0	1	0	0	0	0	0	0	0	0	2220
Swat	Kanju	18	0	0	1	0	744 (37.7%)	1	318	0	0	0	892 (45.2%)	0	0	1974
	Koza Bandai	470 (11.7%)	0	0	0	0	0	1789 (44.6%)	2	0	0	0	1750 (43.6%)	0	0	4011

ANNEXURE - HEALTH FACILITIES

Table - Type of Health Facility Available in Village continued

		None	Govt Hosp	Govt Disp	BHU	RHC	Pvt Hosp	MBBS prvt clinic	Non MBBS prvt clinic	Unani med	Hakeem	Homeo- path	Pvt disp	Pir	Other	Total
Multan	Durana Langana	764 (16.7%)	184	0	19	0	5	571 (12.5%)	1057 (23.2%)	4	912 (20.0%)	1	1045 (22.9%)	0	0	4562
	Binda Sandila	No data														
	Saleh Mahay	No data														
	Lutaf- abad	324	3	2	No data	0	172	616 (22.7%)	49	2	677	93	149	625 (23.0%)	0	2712
	Panj Koha	1498 (34.5%)	193	7	36	0	45	794 (18.3%)	360	120	674 (15.5%)	1	610 (14.0%)	4	0	4342

ANNEXURE - HEALTH FACILITIES

Table - Type of Health Facility Available in Village continued

	None	Govt Hosp	Govt Disp	BHU	RHC	Pvt Hosp	MBBS prvt clinic	Non MBBS prvt clinic	Unani med	Hakeem	Homeo-path	Pvt disp	Pir	Other	Total
Karachi	0	3723 (58.5%)	768 (12.1%)	0	0	816 (12.8%)	291	538	223	0	0	0	0	0	6359
	158	36	2749 (43.0%)	No data	0	409	1214 (19.0%)	1816 (28.4%)	0	0	5	0	0	0	6387
	334	2002 (28.6%)	1761 (25.1%)	0	23	708 (10.1%)	896 (12.8%)	1270 (18.1%)	2	3	0	3	0	0	7002
Khairpur	344 (48.2%)	106 (14.8%)	225 (31.5%)	No data	7	28	2	1	0	0	0	1	0	0	714
	1632 (56.9%)	834 (29.1%)	160	No data	4	160	0	2	0	0	0	73	1	0	2866
	1283 (81.5%)	20	2	No data	1	214 (13.6%)	20	10	1	0	0	23	0	0	1574

ANNEXURE - HEALTH FACILITIES

Table - Type of Health Facility Available in Village continued

	None	Govt Hosp	Govt Disp	BHU	RHC	Prvt Hosp	MBBS prvt clinic	Non MBBS prvt clinic	Unani med	Hakeem	Homeo-path	Prvt disp	Pir	Other	Total
Pachiot	2296 (75.2%)	58	698 (22.9%)	0	0	0	0	0	0	0	0	0	0	0	3052
Pakhar	1282 (49.0%)	0	1298 (49.6%)	21	0	0	0	2	0	1	0	1	10	0	2615

	None	Govt Hosp	Govt Disp	BHU	RHC	Prvt Hosp	MBBS prvt clinic	Non MBBS prvt clinic	Unani med	Hakeem	Homeo-path	Prvt disp	Pir	Other	Total
Total	23516 (19.1%)	7256 (5.9%)	13064 (10.6%)	122	53	8781 (7.1%)	15751 (12.8%)	12251 (9.9%)	7146 (5.8%)	9059 (7.3%)	6887 (5.6%)	12071 (9.8%)	7404 (6.0%)	0	123361

ANNEXURE - PERSONS WITH DISABILITY

Table - Marital Status

		Single	Married	Divorced	Separated	Widow / wid- ower	Total
Mansehra	Kawai	354	344	1	1	121	821
	Ganool	No section 4, form B					
	Hill Kot	307	604	2	0	144	1057
	Satbani	308	424	0	0	137	869
Swabi	Karnal Sher	568	658	2	3	122	1353
	Asota	358	501	2	3	91	955
	Kalu Khan	717	1242	3	2	247	2211
Swat	Tutano Bandai	648	1066	3	14	214	1945
	Kanju	508	624	1	8	114	1255
	Koza Bandai	698	1113	4	14	194	2023

		Single	Married	Divorced	Separated	Widow / wid- ower	Total
Multan	Durana Langana	379	1236	9	20	274	1918
	Binda Sandila	606	1105	14	13	341	2079
	Saleh Mahay	393	1254	16	9	280	1952
	Lutafabad	787	505	3	1	23	1319
	Panj Koha	516	847	6	11	178	1558

ANNEXURE - PERSONS WITH DISABILITY

Table - Marital Status continued

		Single	Married	Divorced	Separated	Widow / wid- ower	Total
Karachi	Ibrahim Haidri	590	469	15	12	185	1271
	Landhi	723	602	10	12	197	1544
	Rehri	953	1470	13	11	327	2774
Khairpur	Bapho	492	869	0	1	66	1428
	Kumb	614	805	7	4	104	1534
	Jishani	559	753	7	5	59	1383

		Single	Married	Divorced	Separated	Widow / wid- ower	Total
Rawlakot	Pachiot	418	741	5	1	202	1367
	Pakhar	486	608	9	3	131	1237

		Single	Married	Divorced	Separated	Widow / wid- ower	Total
Total		11982	17840	132	148	3751	33853

ANNEXURE - PERSONS WITH DISABILITY

Table - Dependency

If unmarried, dependent on parents				
		Yes	No	Total
Mansehra	Kawai	352	494	846
	Ganool	No Data		
	Hill Kot	303	753	1056
	Satbani	285	587	872
Swabi	Karnal Sher	496	852	1348
	Asota	329	622	951
	Kalu Khan	534	1674	2208
Swat	Tutano Bandai	641	1273	1914
	Kanju	471	235	706
	Koza Bandai	550	743	1293

If unmarried, dependent on parents				
		Yes	No	Total
Multan	Durana Langana	322	1605	1927
	Binda Sandila	575	1510	2085
	Saleh Mahay	544	1384	1928
	Lutafabad	271	1162	1433
	Panj Koha	482	1054	1536

ANNEXURE - PERSONS WITH DISABILITY

Table - Dependency continued

If unmarried, dependent on parents				
		Yes	No	Total
Karachi	Ibrahim Haidri	361	888	1249
	Landhi	478	1078	1556
	Rehri	350	2389	2739
Khairpur	Bapho	322	847	1169
	Kumb	298	792	1090
	Jishani	324	894	1218

If unmarried, dependent on parents				
		Yes	No	Total
Rawlakot	Pachiot	413	939	1352
	Pakhar	363	737	1100

If unmarried, dependent on parents				
		Yes	No	Total
Total		9064 (28.7%)	22512 (71.3%)	31576

ANNEXURE - INCLUSION

Table - Participation in family and community activities

		Participation in family activities			Participation in community activities		
		Yes	No	Total	Yes	No	Total
Mansehra	Kawai	449	405	854	388	466	854
	Ganool	No Data					
	Hill Kot	709	347	1056	32	1021	1053
	Satbani	687	185	872	681	191	872
Swabi	Karnal Sher	852	497	1349	156	1193	1349
	Asota	511	444	955	40	906	946
	Kalu Khan	1879	331	2210	1711	499	2210
Swat	Tutano Bandai	1559	384	1943	1540	403	1943
	Kanju	986	272	1258	643	614	1257
	Koza Bandai	1695	323	2018	1329	692	2021

		Participation in family activities			Participation in community activities		
		Yes	No	Total	Yes	No	Total
Multan							
	Durana Langana	1663	264	1927	1333	594	1927
	Binda Sandila	1332	754	2086	700	1386	2086
	Saleh Mahay	1042	913	1955	678	1272	1950
	Lutafabad	534	908	1442	470	970	1440
	Panj Koha	921	176	1097	590	490	1080

ANNEXURE - INCLUSION

Table - Participation in family and community activities continued

Participation in family activities					Participation in community activities		
		Yes	No	Total	Yes	No	Total
Karachi	Ibrahim Haidri	847	413	1260	464	794	1258
	Landhi	1302	286	1588	474	1114	1588
	Rehri	2006	806	2812	1342	1416	2758
Khairpur	Bapho	1235	183	1418	1064	352	1416
	Kumb	1039	319	1358	862	457	1319
	Jishani	1139	242	1381	1068	311	1379

Participation in family activities					Participation in community activities		
		Yes	No	Total	Yes	No	Total
Rawalakot	Pachiot	1190	165	1355	1002	352	1354
	Pakhar	898	324	1222	677	452	1129

Participation in family activities					Participation in community activities		
		Yes	No	Total	Yes	No	Total
Total		24475 (73.2%)	8941 (26.8%)	33416	17244 (52.0%)	15945 (48.0%)	33189

ANNEXURE - VISUAL IMPAIRMENT

Table - Difficulty in seeing even with glasses

Difficulty in seeing even with glasses				
		Yes	No	Total
Mansehra	Kawai	144	713	857
	Ganool			
	Hill Kot	53	1007	1060
	Satbani	7	873	880
Swabi	Karnal Sher 1	2	1	3
	Karnal Sher 2	60	92	152
	Karnal Sher 3	516	678	1194
	Asota 1	63	145	208
	Asota 2	323	436	759
	Kalu Khan 1	116	237	353
	Kalu Khan 2	494	1364	1858
Swat	Tutano Bandai	1115	828	1943
	Kanju	533	725	1258
	Koza Bandai	1185	847	2032

ANNEXURE - VISUAL IMPAIRMENT

Table - Difficulty in seeing even with glasses continued

Difficulty in seeing even with glasses				
		Yes	No	Total
Multan	Durana Langana	1236	692	1928
	Binda Sandila	1257	829	2086
	Saleh Mahay	852	1125	1977
	Lutafabad	891	549	1440
	Panj Koha	1007	554	1561

Difficulty in seeing even with glasses				
		Yes	No	Total
Karachi	Ibrahim Haidri	88	1491	1579
	Landhi	41	1579	1620
	Rehri	76	2764	2840
Khairpur	Bapho	500	947	1447
	Kumb	432	1162	1594
	Jishani	548	843	1391

Difficulty in seeing even with glasses				
		Yes	No	Total
Rawalakot	Pachiot	739	633	1372
	Pakhar	651	599	1250

Difficulty in seeing even with glasses				
		Yes	No	Total
Total		12929 (37.3%)	21713 (62.7%)	34642

ANNEXURE - HEARING & SPEECH IMPAIRMENT

Table - Difficulty in hearing and speech

		Difficulty in hearing even with hearing aids			Difficulty in speech even with hearing aids			Able to hear but unable to speak		
		Yes	No	Total	Yes	No	Total	Yes	No	Total
Mansehra	Kawai	5	852	857	10	847	857	17	840	857
	Ganool									
	Hill Kot	2	1058	1060	4	1056	1060	23	1037	1060
	Satbani	1	879	880	2	878	880	2	878	880
	Karnal Sher 1	0	3	3	0	3	3	0	3	3
Swabi	Karnal Sher 2	17	135	152	14	138	152	4	148	152
	Karnal Sher 3	142	1052	1194	74	1120	1194	54	1140	1194
	Asota 1	14	194	208	15	193	208	2	206	208
	Asota 2	135	624	759	25	734	759	9	750	759
	Kalu Khan 1	50	303	353	0	353	353	5	348	353
	Kalu Khan 2	207	1651	1858	11	1847	1858	17	1841	1858
Swat	Tutano Bandai	546	1397	1943	138	1805	1943	22	1921	1943
	Kanju	273	985	1258	18	1240	1258	70	1188	1258
	Koza Bandai	424	1608	2032	93	1939	2032	24	2008	2032

ANNEXURE - HEARING & SPEECH IMPAIRMENT

Table - Difficulty in hearing and speech continued

	Difficulty in hearing even with hearing aids			Difficulty in speech even with hearing aids			Able to hear but unable to speak		
	Yes	No	Total	Yes	No	Total	Yes	No	Total
Multan	314	1614	1928	64	1864	1928	17	1911	1928
	328	1758	2086	153	1933	2086	56	2030	2086
	148	1829	1977	171	1806	1977	71	1906	1977
	121	1319	1440	157	1283	1440	113	1327	1440
	325	1236	1561	36	1525	1561	40	1521	1561

	Difficulty in hearing even with hearing aids			Difficulty in speech even with hearing aids			Able to hear but unable to speak		
	Yes	No	Total	Yes	No	Total	Yes	No	Total
Karachi	31	1548	1579	9	1570	1579	88	1491	1579
	32	1588	1620	11	1609	1620	63	1557	1620
	15	2825	2840	4	2836	2840	34	2806	2840
Khairpur	305	1142	1447	99	1348	1447	5	1442	1447
	163	1431	1594	162	1432	1594	34	1560	1594
	271	1120	1391	76	1315	1391	25	1366	1391

ANNEXURE - HEARING & SPEECH IMPAIRMENT

Table - Difficulty in hearing and speech continued

	Difficulty in hearing even with hearing aids			Difficulty in speech even with hearing aids			Able to hear but unable to speak		
	Yes	No	Total	Yes	No	Total	Yes	No	Total
Rawalakot	326	1046	1372	50	1322	1372	36	1336	1372
	329	921	1250	81	1169	1250	54	1196	1250
Total	Difficulty in hearing even with hearing aids			Difficulty in speech even with hearing aids			Able to hear but unable to speak		
	Yes	No	Total	Yes	No	Total	Yes	No	Total
	4524 (13%)	30118 (86.9%)	34642	1477 (4.2%)	33165 (95.7%)	34642	885 (2.5%)	33757 (97.4%)	34642

ANNEXURE - PHYSICAL DISABILITY

Table - Difficulty in walking (lower limbs)

		Difficulty in walking (lower limbs)											
		Loss of one limb			Loss of both limbs			No movement or sensation in one limb			No movement or sensation in both limbs		
		Yes	No	Total	Yes	No	Total	Yes	No	Total	Yes	No	Total
Mansehra	Kawai	2	855	857	0	857	857	12	845	857	14	843	857
	Ganool												
	Hill Kot	2	1058	1060	1	1059	1060	18	1042	1060	37	1023	1060
	Satbani	7	873	880	0	880	880	4	876	880	45	835	880
Swabi	Karnal Sher	4	1345	1349	2	1347	1349	31	1318	1349	68	1279	1347
	Asota	3	964	967	1	964	967	40	927	967	33	934	967
	Kalu Khan	3	2208	2211	4	2207	2211	3	2208	2211	65	2146	2211
Swat	Tutano Bandai	5	1938	1943	4	982	1983	29	1914	1943	40	1903	1943
	Kanju	8	1250	1258	0	1258	1258	7	1251	1258	14	1244	1258
	Koza Bandai	11	2021	2032	1	2031	2032	16	2016	2032	25	2007	2032

ANNEXURE - PHYSICAL DISABILITY

Table - Difficulty in walking (lower limbs) continued

Difficulty in walking (lower limbs)													
		Loss of one limb			Loss of both limbs			No movement or sensation in one limb			No movement or sensation in both limbs		
		Yes	No	Total	Yes	No	Total	Yes	No	Total	Yes	No	Total
Multan	Durana Langana	5	1923	1928	1	1927	1928	22	1906	1928	54	1874	1928
	Binda Sandila	7	2079	2086	1	2085	2086	15	2071	2086	34	2052	2086
	Saleh Mahay	9	1968	1977	8	1969	1977	86	1891	1977	189	1788	1977
	Lutafabad	23	1417	1440	64	1376	1440	73	1367	1440	113	1327	1440
	Panj Koha	11	1550	1561	1	1560	1561	11	1550	1561	52	1509	1561

Difficulty in walking (lower limbs)													
		Loss of one limb			Loss of both limbs			No movement or sensation in one limb			No movement or sensation in both limbs		
		Yes	No	Total	Yes	No	Total	Yes	No	Total	Yes	No	Total
Karachi	Ibrahim Haidri	2	1577	1579	0	1579	1579	4	1575	1579	22	1557	1579
	Landhi	11	1609	1620	1	1619	1620	33	1587	1620	89	1531	1620
	Rehri	6	2834	2840	0	2840	2840	23	2817	2840	103	2737	2840
Khairpur	Bapho	8	1439	1447	7	1440	1447	77	1370	1447	65	1382	1447
	Kumb	11	1583	1594	10	1584	1594	55	1539	1594	100	1494	1594
	Jishani	9	1382	1391	12	1379	1391	53	1338	1391	89	1302	1391

ANNEXURE - PHYSICAL DISABILITY

Table - Difficulty in walking (lower limbs) continued

Difficulty in walking (lower limbs)													
		Loss of one limb			Loss of both limbs			No movement or sensation in one limb			No movement or sensation in both limbs		
		Yes	No	Total	Yes	No	Total	Yes	No	Total	Yes	No	Total
Rawalakot	Pachiot	33	1339	1372	22	1350	1372	14	1358	1372	29	1343	1372
	Pakhar	19	1231	1250	11	1239	1250	20	1230	1250	49	1201	1250

Difficulty in walking (lower limbs)												
	Loss of one limb			Loss of both limbs			No movement or sensation in one limb			No movement or sensation in both limbs		
	Yes	No	Total	Yes	No	Total	Yes	No	Total	Yes	No	Total
Total	199	34443	34642	151	33532	34642	646	33996	34642	1329	33311	34640

ANNEXURE - PHYSICAL DISABILITY

Table - Difficulty in walking (lower limbs) continued

Difficulty in walking (lower limbs)													
		Less movement or sensation in one limb			Less movement or sensation in both limbs			Deformity of one limb			Deformity of both limbs		
		Yes	No	Total	Yes	No	Total	Yes	No	Total	Yes	No	Total
Mansehra	Kawai	87	770	857	213	644	857	32	825	857	8	849	857
	Ganool												
	Hill Kot	20	1040	1060	22	1038	1060	79	981	1060	21	1039	1060
	Satbani	42	838	880	74	806	880	75	805	880	33	847	880
Swabi	Karnal Sher	126	1223	1349	200	1149	1349	152	1197	1349	82	1267	1349
	Asota	78	889	967	280	687	967	44	923	967	39	928	967
	Kalu Khan	60	2151	2211	272	1939	2211	68	2143	2211	37	2174	2211
Swat	Tutano Bandai	138	1805	1943	179	1764	1943	59	1884	1943	41	1902	1943
	Kanju	81	1177	1258	144	1114	1258	79	1179	1258	52	1206	1258
	Koza Bandai	119	1913	2032	195	1837	2032	63	1969	2032	27	2005	2032

ANNEXURE - PHYSICAL DISABILITY

Table - Difficulty in walking (lower limbs) continued

Difficulty in walking (lower limbs)												
	Less movement or sensation in one limb			Less movement or sensation in both limbs			Deformity of one limb			Deformity of both limbs		
	Yes	No	Total	Yes	No	Total	Yes	No	Total	Yes	No	Total
Multan	Durana Langana	130	1798	1928	358	1570	1928	67	1861	40	1888	1928
	Binda Sandila	100	1986	2086	343	1743	2086	65	2021	71	2015	2086
	Saleh Mahay	118	1859	1977	384	1593	1977	101	1876	30	1947	1977
	Lutafabad	123	1317	1440	102	1338	1440	38	1402	9	1431	1440
	Panj Koha	161	1400	1561	243	1318	1561	48	1513	28	1533	1561

ANNEXURE - PHYSICAL DISABILITY

Table - Difficulty in walking (lower limbs) continued

Difficulty in walking (lower limbs)													
		Less movement or sensation in one limb			Less movement or sensation in both limbs			Deformity of one limb			Deformity of both limbs		
		Yes	No	Total	Yes	No	Total	Yes	No	Total	Yes	No	Total
Karachi	Ibrahim Haidri	72	1507	1579	137	1442	1579	84	1495	1579	45	1534	1579
	Landhi	43	1577	1620	97	1523	1620	101	1519	1620	57	1563	1620
	Rehri	92	2748	2840	138	2702	2840	76	2764	2840	49	2791	2840
Khairpur	Bapho	47	1400	1447	152	1295	1447	26	1421	1447	22	1425	1447
	Kumb	80	1514	1594	149	1445	1594	16	1578	1594	28	1566	1594
	Jishani	56	1335	1391	123	1268	1391	42	1349	1391	15	1376	1391

ANNEXURE - PHYSICAL DISABILITY

Table - Difficulty in walking (lower limbs) continued

Difficulty in walking (lower limbs)										
		Less movement or sensation in one limb			Less movement or sensation in both limbs			Deformity of one limb		
		Yes	No	Total	Yes	No	Total	Yes	No	Total
Pachiot		60	1312	1372	149	1223	1372	22	1350	1372
Pakhhar		42	1208	1250	97	1153	1250	28	1222	1250
Rawalakot										
Total										

Difficulty in walking (lower limbs)										
		Less movement or sensation in one limb			Less movement or sensation in both limbs			Deformity of one limb		
		Yes	No	Total	Yes	No	Total	Yes	No	Total
Total		1875 (5.4%)	32767	34642	4051 (11.7%)	30591	34642	1365 (3.9%)	33277	34642
								766 (2.2%)	33876	34642

ANNEXURE - PHYSICAL DISABILITY

Table - Difficulty in working (upper limbs)

Difficulty in working (upper limbs)													
		Loss of one limb			Loss of both limbs			No movement or sensation in one limb			No movement of sensation in both limbs		
		Yes	No	Total	Yes	No	Total	Yes	No	Total	Yes	No	Total
Mansehra	Kawai	2	855	857	1	856	857	11	846	857	12	845	857
	Ganool												
	Hill Kot	6	1054	1060	0	1060	1060	14	1046	1060	7	1053	1060
	Satbani	9	871	880	0	880	880	5	875	880	14	866	880
Swabi	Karnal Sher	3	1346	1349	0	1349	1349	18	1331	1349	27	1322	1349
	Asota	3	964	967	1	966	967	23	944	967	8	959	967
	Kalu Khan	7	2204	2211	0	2211	2211	1	2210	2211	12	2199	2211
Swat	Tutano Bandai	2	1941	1943	2	1941	1943	26	1917	1943	12	1931	1943
	Kanju	8	1250	1258	0	1258	1258	4	1254	1258	2	1256	1258
	Koza Bandai	10	2022	2032	1	2031	2032	12	2020	2032	5	2026	2032

ANNEXURE - PHYSICAL DISABILITY

Table - Difficulty in working (upper limbs) continued

Difficulty in working (upper limbs)													
		Loss of one limb			Loss of both limbs			No movement or sensation in one limb			No movement of sensation in both limbs		
		Yes	No	Total	Yes	No	Total	Yes	No	Total	Yes	No	Total
Multan	Durana Langana	4	1924	1928	0	1928	1928	16	1912	1928	19	1909	1928
	Binda Sandila	16	2070	2086	0	2086	2086	12	2074	2086	14	2072	2086
	Saleh Mahay	7	1970	1977	4	1973	1977	44	1933	1977	274	1703	1977
	Lutafa-bad	2	1438	1440	53	1387	1440	71	1369	1440	66	1374	1440
	Panj Koha	17	1544	1561	1	1560	1561	11	1550	1561	31	1530	1561

Difficulty in working (upper limbs)													
		Loss of one limb			Loss of both limbs			No movement or sensation in one limb			No movement of sensation in both limbs		
		Yes	No	Total	Yes	No	Total	Yes	No	Total	Yes	No	Total
Karachi	Ibrahim Haidri	3	1576	1579	0	1579	1579	3	1576	1579	7	1572	1579
	Landhi	8	1612	1620	0	1620	1620	19	1601	1620	19	1601	1620
	Rehri	3	2837	2840	1	2839	2840	19	2821	2840	19	2821	2840
Khairpur	Bapho	0	1447	1447	0	1447	1447	19	1428	1447	4	1443	1447
	Kumb	5	1589	1594	2	1592	1594	19	1575	1594	21	1573	1594
	Jishani	4	1387	1391	5	1386	1391	30	1361	1391	17	1374	1391

ANNEXURE - PHYSICAL DISABILITY

Table - Difficulty in working (upper limbs) continued

Difficulty in working (upper limbs)													
		Loss of one limb			Loss of both limbs			No movement or sensation in one limb			No movement of sensation in both limbs		
		Yes	No	Total	Yes	No	Total	Yes	No	Total	Yes	No	Total
Rawalakot	Pachiot	23	1349	1372	10	1362	1372	19	1353	1372	11	1361	1372
	Pakhar	10	1240	1250	7	1243	1250	25	1225	1250	20	1230	1250

Difficulty in working (upper limbs)												
Total	Loss of one limb			Loss of both limbs			No movement or sensation in one limb			No movement of sensation in both limbs		
	Yes	No	Total	Yes	No	Total	Yes	No	Total	Yes	No	Total
	152 (0.4%)	34490	34642	88 (0.3%)	34554	34642	421 (1.2%)	34221	34642	621 (1.8%)	34020	34642

ANNEXURE - PHYSICAL DISABILITY

Table - Difficulty in working (upper limbs) continued

		Less movement or sensation in one limb			Less movement or sensation in both limbs			Deformity of one limb			Deformity of both limbs		
		Yes	No	Total	Yes	No	Total	Yes	No	Total	Yes	No	Total
Mansehra	Kawai	44	813	857	145	712	857	12	845	857	2	855	857
	Ganool												
	Hill Kot	13	1047	1060	10	1050	1060	48	1012	1060	7	1053	1060
	Satbani	8	872	880	18	862	880	22	858	880	13	867	880
Swabi	Karnal Sher	62	1287	1349	36	1313	1349	50	1299	1349	35	1314	1349
	Asota	38	929	967	80	887	967	20	947	967	20	947	967
	Kalu Khan	21	2190	2211	106	2105	2211	10	2201	2211	2	2209	2211
Swat	Tutano Bandai	38	1905	1943	32	1911	1943	24	1919	1943	24	1919	1943
	Kanju	67	1191	1258	73	1185	1258	28	1230	1258	28	1230	1258
	Koza Bandai	79	1953	2032	81	1951	2032	26	2006	2032	12	2020	2032

ANNEXURE - PHYSICAL DISABILITY

Table - Difficulty in working (upper limbs) continued

		Less movement or sensation in one limb			Less movement or sensation in both limbs			Deformity of one limb			Deformity of both limbs		
		Yes	No	Total	Yes	No	Total	Yes	No	Total	Yes	No	Total
Multan	Durana Langana	101	1827	1928	154	1774	1928	39	1889	1928	23	1905	1928
	Binda Sandila	68	2018	2086	79	2007	2086	31	2055	2086	26	2060	2086
	Saleh Mahay	60	1917	1977	106	1871	1977	26	1951	1977	10	1967	1977
	Lutafabad	31	1409	1440	31	1409	1440	21	1419	1440	9	1431	1440
	Panj Koha	92	1469	1561	103	1458	1561	17	1544	1561	10	1551	1561

		Less movement or sensation in one limb			Less movement or sensation in both limbs			Deformity of one limb			Deformity of both limbs		
		Yes	No	Total	Yes	No	Total	Yes	No	Total	Yes	No	Total
Karachi	Ibrahim Haidri	47	1532	1579	32	1547	1579	40	1539	1579	20	1559	1579
	Landhi	27	1593	1620	25	1595	1620	24	1596	1620	8	1612	1620
	Rehri	36	2804	2840	28	2812	2840	25	2815	2840	13	2827	2840
Khairpur	Bapho	16	1431	1447	16	1431	1447	8	1439	1447	5	1442	1447
	Kumb	26	1568	1594	11	1583	1594	5	1589	1594	12	1582	1594
	Jishani	13	1378	1391	28	1363	1391	12	1379	1391	8	1383	1391

ANNEXURE - PHYSICAL DISABILITY

Table - Difficulty in working (upper limbs) continued

		Less movement or sensation in one limb			Less movement or sensation in both limbs			Deformity of one limb			Deformity of both limbs		
		Yes	No	Total	Yes	No	Total	Yes	No	Total	Yes	No	Total
Rawalakot	Pachiot	29	1343	1372	57	1315	1372	7	1365	1372	5	1367	1372
	Pakhar	29	1231	1250	24	1226	1250	12	1238	1250	7	1243	1250

	Less movement or sensation in one limb			Less movement or sensation in both limbs			Deformity of one limb			Deformity of both limbs		
	Yes	No	Total	Yes	No	Total	Yes	No	Total	Yes	No	Total
Total	945 (2.7%)	33707	34642	1275 (3.7%)	33367	34642	507 (1.5%)	34135	34642	299 (0.9%)	34343	34642

ANNEXURE - INTELLECTUAL IMPAIRMENT

Table - Mental or Behaviour

		Observe strange behavior			Complain of seizures			Difficulty in daily living activities without help (feeding, dressing etc)			Difficulty in playing and learning with children of same age		
		Yes	No	Total	Yes	No	Total	Yes	No	Total	Yes	No	Total
Mansehra	Kawai	71	786	857	22	835	857	65	792	857	15	842	857
	Ganool												
	Hill Kot	35	1025	1060	37	1023	1060	17	1043	1060	5	1055	1060
	Satbani	4	876	880	17	863	880	20	860	880	6	874	880
Swabi	Karnal Sher	152	1197	1349	56	1293	1349	82	1267	1349	43	1306	1349
	Asota	33	934	967	5	962	967	63	904	967	10	957	967
	Kalu Khan	113	2098	2211	2	2209	2211	115	2096	2211	77	2134	2211
Swat	Tutano Bandai	190	1753	1943	32	1911	1943	22	1921	1943	7	1936	1943
	Kanju	73	1185	1258	72	1186	1258	17	1241	1258	71	1187	1258
	Koza Bandai	469	1563	2032	98	1934	2032	51	1981	2032	23	2009	2032

ANNEXURE - INTELLECTUAL IMPAIRMENT

Table - Mental or Behaviour continued

		Observe strange behavior			Complain of seizures			Difficulty in daily living activities without help (feeding, dressing etc)			Difficulty in playing and learning with children of same age		
		Yes	No	Total	Yes	No	Total	Yes	No	Total	Yes	No	Total
Multan	Durana Langana	45	1883	1928	20	1908	1928	41	1887	1928	26	1902	1928
	Binda Sandila	53	2033	2086	42	2044	2086	53	2033	2086	39	2047	2086
	Saleh Mahay	56	1921	1977	31	1946	1977	65	1912	1977	40	1937	1977
	Lutafabad	30	1410	1440	113	1327	1440	34	1406	1440	9	1431	1440
	Panj Koha	61	1500	1561	32	1529	1561	25	1536	1561	17	1544	1561

		Observe strange behavior			Complain of seizures			Difficulty in daily living activities without help (feeding, dressing etc)			Difficulty in playing and learning with children of same age		
		Yes	No	Total	Yes	No	Total	Yes	No	Total	Yes	No	Total
Karachi	Ibrahim Haidri	168	1411	1579	54	1525	1579	47	1532	1579	12	1567	1579
	Landhi	149	1471	1620	38	1582	1620	21	1599	1620	6	1614	1620
	Rehri	154	2686	2840	40	2800	2840	22	2818	2840	7	2833	2840
Khairpur	Bapho	66	1381	1447	16	1431	1447	5	1442	1447	6	1441	1447
	Kumb	31	1563	1594	12	1582	1594	7	1587	1594	2	1592	1594
	Jishani	50	1341	1391	34	1357	1391	17	1374	1391	14	1377	1391

ANNEXURE - INTELLECTUAL IMPAIRMENT

Table - Mental or Behaviour continued

		Observe strange behavior			Complain of seizures			Difficulty in daily living activities without help (feeding, dressing etc)			Difficulty in playing and learning with children of same age		
		Yes	No	Total	Yes	No	Total	Yes	No	Total	Yes	No	Total
Rawala-kot	Pachiot	46	1326	1372	9	1363	1372	22	1350	1372	12	1360	1372
	Pakhar	121	1129	1250	64	1186	1250	77	1173	1250	33	1217	1250

	Observe strange behavior			Complain of seizures			Difficulty in daily living activities without help (feeding, dressing etc)			Difficulty in playing and learning with children of same age		
	Yes	No	Total	Yes	No	Total	Yes	No	Total	Yes	No	Total
Total	2170 (6.3%)	32472	34642	846 (2.4%)	33796	34642	888 (2.6%)	33754	34642	480 (1.4%)	34162	34642

ANNEXURE - SLOW LEARNERS

Table - Slow Learners

		Delay in learning new tasks			Delay in remembering and concentrating			Delay in communication			Playing and learning with children of lesser age		
		Yes	No	Total	Yes	No	Total	Yes	No	Total	Yes	No	Total
Mansehra	Kawai	68	789	857	69	788	857	56	801	857	4	853	857
	Ganool												
	Hill Kot	126	934	1060	132	928	1060	132	928	1060	3	1057	1060
	Satbani	47	833	880	37	843	880	52	828	880	4	876	880
Swabi	Karnal Sher	171	1178	1349	163	1186	1349	166	1183	1349	56	1293	1349
	Asota	58	909	967	57	910	967	66	901	967	9	958	967
	Kalu Khan	96	1629	1725	106	1619	1725	109	1616	1725	58	1666	1725
Swat	Tutano Bandai	165	1778	1943	72	1871	1943	50	1893	1943	7	1936	1943
	Kanju	27	1231	1258	67	1191	1258	76	1182	1258	33	1225	1258
	Koza Bandai	112	1920	2032	96	1936	2032	80	1952	2032	33	1999	2032

ANNEXURE - SLOW LEARNERS

Table - Slow Learners continued

		Delay in learning new tasks			Delay in remembering and concentrating			Delay in communication			Playing and learning with children of lesser age		
		Yes	No	Total	Yes	No	Total	Yes	No	Total	Yes	No	Total
Multan	Durana Langana	50	1878	1928	35	1893	1928	58	1870	1928	8	1920	1928
	Binda Sandila	93	1993	2086	70	2016	2086	121	1965	2086	16	2070	2086
	Saleh Mahay	71	1906	1977	68	1909	1977	62	1915	1977	30	1947	1977
	Lutafabad	28	1412	1440	16	1424	1440	31	1409	1440	3	1437	1440
	Panj Koha	56	1505	1561	38	1523	1561	67	1494	1561	17	1544	1561

		Delay in learning new tasks			Delay in remembering and concentrating			Delay in communication			Playing and learning with children of lesser age		
		Yes	No	Total	Yes	No	Total	Yes	No	Total	Yes	No	Total
Karachi	Ibrahim Haidri	103	1476	1579	60	1519	1579	56	1523	1579	13	1566	1579
	Landhi	43	1577	1620	42	1578	1620	119	1501	1620	10	1610	1620
	Rehri	86	2754	2840	75	2765	2840	47	2793	2840	13	2827	2840
Khairpur	Bapho	53	1394	1447	13	1434	1447	20	1427	1447	2	1445	1447
	Kumb	18	1576	1594	12	1582	1594	19	1575	1594	5	1589	1594
	Jishani	40	1351	1391	19	1372	1391	30	1361	1391	11	1380	1391

ANNEXURE - SLOW LEARNERS

Table - Slow Learners continued

		Delay in learning new tasks			Delay in remembering and concentrating			Delay in communication			Playing and learning with children of lesser age		
		Yes	No	Total	Yes	No	Total	Yes	No	Total	Yes	No	Total
Rawalakot	Pachiot	58	1314	1372	47	1325	1372	50	1322	1372	31	1341	1372
	Pakhar	135	1115	1250	123	1127	1250	94	1156	1250	35	1215	1250

	Delay in learning new tasks			Delay in remembering and concentrating			Delay in communication			Playing and learning with children of lesser age		
	Yes	No	Total	Yes	No	Total	Yes	No	Total	Yes	No	Total
Total	1704 (5.0%)	32452	34156	1417 (4.1%)	32739	34156	1561 (4.6%)	32595	34156	401 (1.2%)	33754	34156

ANNEXURE - ONSET OF DISABILITY

Table - Congenital and Acquired

	Congenital			Acquired											
	Before birth			Hereditary			Disease			Psychiatric disturbance			Accident/ injury		
	Yes	No	Total	Yes	No	Total	Yes	No	Total	Yes	No	Total	Yes	No	Total
Mansehra	56	801	857	2	855	857	45	812	857	0	857	857	4	853	857
	0	1060	1060	0	1060	1060	0	1060	1060	0	1060	1060	0	1060	1060
	51	829	880	1	879	880	23	857	880	2	878	880	15	865	880
Swabi	1012	337	1349	15	1334	1349	655	694	1349	54	1295	1349	146	1203	1349
	736	231	967	11	956	967	648	319	967	5	962	967	61	906	967
	1851	360	2211	288	1923	2211	1143	1068	2211	6	2205	2211	124	2087	2211
	982	961	1943	6	1937	1943	1355	588	1943	78	1865	1943	138	1805	1943
Swat	1211	47	1258	11	1247	1258	1029	229	1258	30	1228	1258	106	1152	1258
	1793	239	2032	25	2007	2032	1446	586	2032	257	1775	2032	148	1884	2032

ANNEXURE - ONSET OF DISABILITY

Table - Congenital and Acquired continued

	Congenital			Acquired											
	Before birth			Hereditary			Disease			Psychiatric disturbance			Accident/injury		
	Yes	No	Total	Yes	No	Total	Yes	No	Total	Yes	No	Total	Yes	No	Total
Multan	1734	194	1928	3	1925	1928	1315	613	1928	8	1920	1928	174	1754	1928
	1757	329	2086	41	2045	2086	1123	963	2086	6	2080	2086	135	1951	2086
	113	1864	1977	33	1944	1977	1515	462	1977	26	1951	1977	48	1929	1977
	1440	0	1440	47	1393	1440	1384	56	1440	0	1440	1440	10	1430	1440
	1417	144	1561	20	1541	1561	1312	249	1561	16	1545	1561	69	1492	1561

	Congenital			Acquired											
	Before birth			Hereditary			Disease			Psychiatric disturbance			Accident/injury		
	Yes	No	Total	Yes	No	Total	Yes	No	Total	Yes	No	Total	Yes	No	Total
Karachi	1140	439	1579	125	1454	1579	695	884	1579	29	1550	1579	113	1466	1579
	659	961	1620	21	1599	1620	298	1322	1620	79	1541	1620	62	1558	1620
	1980	860	2840	52	2788	2840	1046	1794	2840	73	2767	2840	111	2729	2840
Khairpur	1390	57	1447	51	1396	1447	1270	177	1447	1	1446	1447	28	1419	1447
	1324	270	1594	50	1544	1594	1201	393	1594	26	1568	1594	38	1556	1594
	1369	22	1391	36	1355	1391	1214	177	1391	34	1357	1391	37	1354	1391

ANNEXURE - ONSET OF DISABILITY

Table - Congenital and Acquired continued

		Congenital			Acquired														
		Before birth			Hereditary			Disease			Psychiatric disturbance			Accident/ injury			Malnutrition		
Rawal akot	Pachiot	814	558	1372	118	1254	1372	613	759	1372	23	1349	1372	64	1308	1372	1	1371	1372
	Pakhar	737	513	1250	45	1205	1250	531	719	1250	29	1221	1250	87	1163	1250	6	1244	1250
		Acquired																	
		Congenital			Hereditary			Disease			Psychiatric disturbance			Accident/ injury			Malnutrition		
		Yes	No	Total	Yes	No	Total	Yes	No	Total	Yes	No	Total	Yes	No	Total	Yes	No	Total
		23566	11076	34642	1001	33641	34642	19861	14781	34642	782	33860	34642	1718	32924	34642	396	34246	34642
Total		23566	11076	34642	1001	33641	34642	19861	14781	34642	782	33860	34642	1718	32924	34642	396	34246	34642

ANNEXURE - COST OF DISABILITY

Table - Cost of Treatment

		Cost of treatment for past one year					
		0-500	>500-1000	>1000-2000	>2000-5000	>5000	Total
Mansehra	Kawai	92	181	159	101	45	578
	Ganool						
	Hill Kot	0	0	0	0	0	0
	Satbani	51	47	69	21	473	661
Swabi	Karnal Sher	109	43	140	128	921	1341
	Asota	64	28	38	160	648	938
	Kalu Khan	65	488	673	395	597	2218
Swat	Tutano Bandai	532	305	173	142	746	1898
	Kanju	540	114	135	97	365	1251
	Koza Bandai	918	118	113	201	654	2004

		Cost of treatment for past one year					
		0-500	>500-1000	>1000-2000	>2000-5000	>5000	Total
Multan	Durana Langana	1785	67	43	21	19	1935
	Binda Sandila	1313	283	128	84	270	2078
	Saleh Mahay	156	286	40	8	1171	1661
	Lutafabad	56	7	12	7	1363	1445
	Panj Koha	813	407	130	46	141	1537

ACKNOWLEDGEMENTS

Table - Cost of Treatment continued

		Cost of treatment for past one year					
		0-500	>500-1000	>1000-2000	>2000-5000	>5000	Total
Karachi	Ibrahim Haidri	51	22	79	95	1020	1267
	Landhi	498	259	276	164	372	1569
	Rehri	726	644	718	276	249	2613
Khairpur	Bapho	43	4	19	171	1177	1414
	Kumb	323	56	56	153	981	1569
	Jishani	310	130	103	194	634	1371

		Cost of treatment for past one year					
		0-500	>500-1000	>1000-2000	>2000-5000	>5000	Total
Rawalakot	Pachiot	412	42	43	109	582	1188
	Pakhar	488	272	114	62	249	1185

		Cost of treatment for past one year					
		0-500	>500-1000	>1000-2000	>2000-5000	>5000	Total
Total		9345 (29.4%)	3803 (12.0%)	3261 (10.3%)	2635 (8.3%)	12677 (40.0%)	31721

